



Flight Plan & Site Survey

Created using **RPAS Wilco**[®]

Reference No:	D00002
Title:	ANti Gravite école Aux-Quatre-Vents 1920 Rue Borduas, Sainte-Julie, QC, J3E 1V6
Pilot Name:	Alain Carpentier
Pilot Certificate:	PC2306520264
Flight Start:	November 16, 2024 6:56 AM
Flight End:	November 16, 2024 11:59 PM
Flight Address:	Lat: 45.58276 Lng: -73.33986
Flight Area (Latitude):	45° 34' 57.94" N (45.583)
Flight Area (Longitude):	73° 20' 23.50" W (-73.34)
Altitude - Radius:	Alt: 400 ft - Rad: 926.0 m (0.5 nm)
Classification:	CONTROLLED
FIR - Contact:	CZUL - 506-867-7173

Notes:

Your flight is in controlled airspace.

If your RPAS is > 250g, please obtain RPAS Flight Authorization using the NavDrone app or by contacting NavCanada. (CARs 901.71)

Please ensure you received all required authorizations prior to flight.

Disclaimer

This Site Survey was created using RPAS Wilco by AIM Robotics. The flight plan contained is intended only for RPAS flights on the date/time and location specified. The user accepts all responsibility for the accuracy and completeness of the information contained.

For the complete Terms & Conditions, see

<https://rpaswilco.com/#/tnc>

Included

- Site Survey
- Obstacles (if available)
- Nearby Aerodromes
- Canadian Aviation Regulations
- GFA
- Aerodrome Supplements
 - METAR & TAF (if available)
 - NOTAMs
 - CFS





Flight Map



RPAS Specification

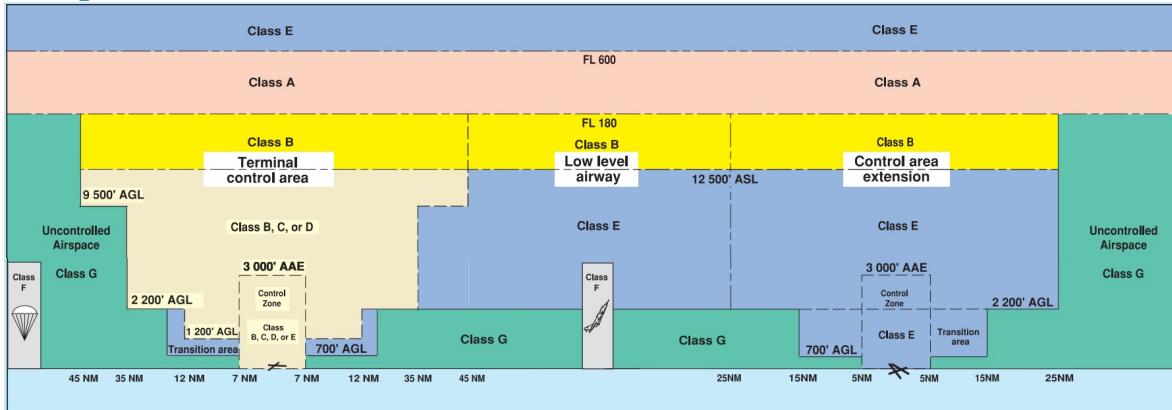
- **Manufacturer:**
MAAC
- **Model:**
Model Airplane (Twisted hobby super lite indoor)
- **Registration Number:**
NA
- **Eligible for advanced operations:**
Yes
- **Manufacturer RPAS safety assurance:**
 - Controlled Airspace: Yes
 - Near People: N/A
 - Over People: N/A

MAP Details

	Latitude	Longitude
 MODEL	45° 34' 57.94" N (45.583)	73° 20' 23.50" W (-73.34)
 Pilot	()	()
 Payload Op.	()	()
 Observer	()	()

Latitude	Longitude
Latitude	Longitude

Airspace Classification



Overlying Airspaces

Class	Name	Floor	Ceiling
C	St-Hubert CZ	SFC	2000MSL
E	T616 Airway	2200AGL	12500MSL
B	T616 Airway	12500MSL	18000MSL
E	T662 Airway	2200AGL	12500MSL
B	T662 Airway	12500MSL	18000MSL
E	St-Jean, QC TA	700AGL	12500MSL
B	St-Jean, QC TA	12500MSL	18000MSL
E	T614 Airway	2200AGL	12500MSL
B	T614 Airway	12500MSL	18000MSL
E	Montreal FIR CAE	2000MSL	12500MSL
B	Montreal FIR CAE	12500MSL	18000MSL
C	Montréal, QC TCA XPNDR MANDTRY	2000MSL	3000MSL
C	Montréal, QC TCA XPNDR MANDTRY	3000MSL	5000MSL
C	Montréal, QC TCA XPNDR MANDTRY	5000MSL	12500MSL
E	Montreal FIR CAE	6000MSL	12500MSL
B	Montreal FIR CAE	12500MSL	18000MSL

Nearest Aerodromes & Distance from Operation

ST-MATHIEU-DE-BELOEIL (GILLES BEAUDET) (CSB3 - AERODROME - Reg)	Lat: 45.59	Long: -73.238	7.967KM	4.3NM	E
ST-HUBERT (CYHU - AERODROME - Cert)	Lat: 45.518	Long: -73.417	9.377KM	5.06NM	SW
ST-MATHIAS (CSV9 - WATERDROME -)	Lat: 45.503	Long: -73.252	11.202KM	6.05NM	SE
ST-HUBERT HELI-INTER (CTG2 - HELIPORT - Reg)	Lat: 45.531	Long: -73.412	8.042KM	4.34NM	SW
ST-MATHIAS (CSP5 - AERODROME - Reg)	Lat: 45.501	Long: -73.242	11.863KM	6.41NM	SE

QUEBEC

AERODROME/FACILITY DIRECTORY

ST-MATHIEU-DE-BELOEIL (GILLES BEAUDET) QC

CSB3

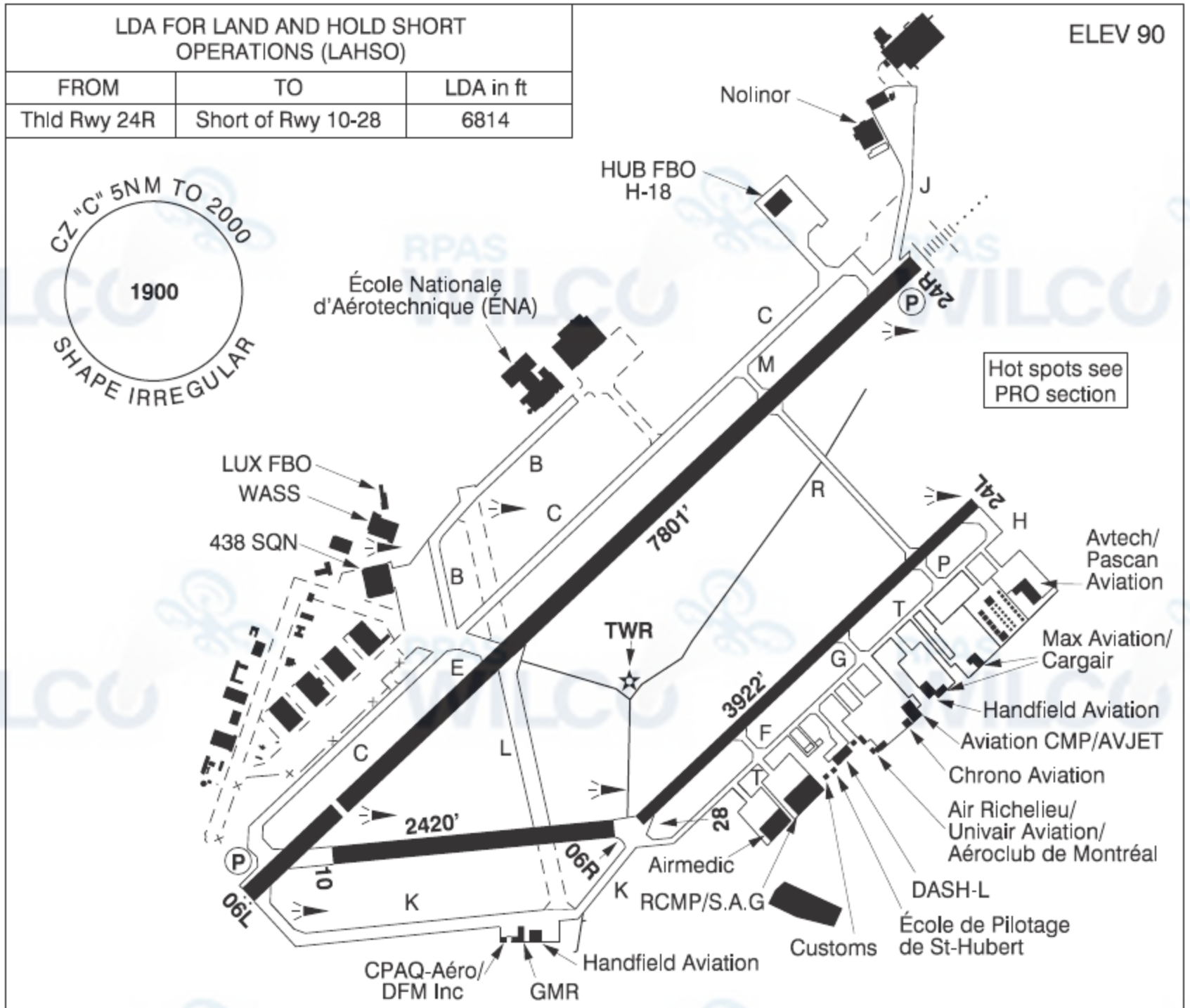
REF	N45 35 25 W73 14 17 1.5NW 15°W (2014) UTC-5(4) Elev 49' VTA A5002	
OPR	Corporation Aéroport SMB Inc 450-446-5931 Reg PPR	
PF	B-7,8 C-3,4,5	
FLT PLN	(bil) FIC Québec 866-GOMÉTÉO or 866-WXBRIEF (Toll free within Canada) or 866-541-4105 (Toll free within Canada & USA) ACC Montréal 514-633-3211 or 800-633-1353, all Flt Plns, IFR tng PPR. Flt Plns by Fax at 514-633-2877 & include phone numbers where pilot can be reached prior to dep. IFR clearance or activation 514-633-3014.	
SERVICES	FUEL 100LL (Corp. Aéroport SMB. Members only.) For visitors PPR Mon-Fri, ltd hrs OIL All S 1,2,3,4,5 PVT ADV Aviamax 450-446-2570; Helico SB3 450-536-0880; Vortex Aviation 450-446-7400	
RWY DATA	Rwy 15(150°)/33(330°) 2581x50 ASPH Thld 15 displ 203' Thld 33 displ 178' RCR Opr Ltd win maint	
LIGHTING	15-(TE ME), 33-(TE ME) ARCAL-122.7 type K	
COMM	(bil) ATF tfc 122.7 5NM outside CYHU CZ 2000 ASL	
PRO	<p>Circuits: All circuits not to exceed 1000 ASL. Touch/go for helicopters are not auth on Rwy 15. Touch/go for all aircraft are not auth btwn 03-13Z†</p> <p>Circuit Rwy 15: Extend downwind near the wooded area. Maintain 1000 ASL until turning final. Avoid over-flying built-up area below 1000 ASL on the downwind leg.</p> <p>Circuit Rwy 33: Climb on rwy centreline to 1000 ASL before turning for circuits or BPOC.</p> <p>Airspace: CYA 627(S) aprx 12NM NE of A/D up to 3000 ASL, cont daylight.</p> <p>Training areas: See Montréal Terminal VTPC. Broadcast ground position and movement intentions. Pilots are requested to avoid flight below 2000 AGL when flying over the Mont-Saint-Hilaire Migratory Bird Sanctuary (Saint-Hilaire, QC N45 33 00 W73 09 00).</p>	
CAUTION	<p>Twy B easily confused with Rwy 15/33.</p> <p>CYHU instrument apch: Acft flying at Montréal/St-Hubert aprt (9NM WSW of Beloëil A/D Rwy 24R instrument apch may overfly Beloëil A/D at 2100 ASL.)</p> <p>Circuits: Rwy 15 tfc ptn, twr less than 1NM NE of A/D, 331 ASL. Rwy 33 tfc ptn, twr at 1NM SSW of A/D, 240 ASL.</p>	

QUEBEC

AERODROME/FACILITY DIRECTORY

MONTRÉAL / ST-HUBERT QC

CYHU



REF	N45 31 05 W73 25 01 3E 15°W (2010) UTC-5(4) Elev 90' VTA A5002 LO6 LO7 LO8 HI5 T2 CAP
OPR	DASH-L 450-678-6030 Fax 450-462-0346 Cert Ldg fees
PF	B-1,2,3,6 C-4,5
CUST	AOE/15 888-226-7277 1330-0300Z‡ Mon-Fri exc hols
FLT PLN	(bil)
FIC	Québec 866-GOMÉTÉO or 866-WXBRIEF (Toll free within Canada) or 866-541-4105 (Toll free within Canada & USA)
ACC	Montréal 514-633-3211 or 800-633-1353. All Flt Plns, IFR tng flts PPR. Flt Plns by Fax at 514-633-2877 & include phone numbers where pilot can be reached prior to dep.
WX	METAR AUTO H24 (see COMM) TAF H24, issue times: 00, 06, 12, 18Z. WxCam

QUEBEC

AERODROME/FACILITY DIRECTORY

MONTRÉAL / ST-HUBERT QC (Cont'd)

CYHU

SERVICES	
FUEL	100LL, JA-1 (FSII avbl), JP-4 F-34
OIL	All (Mil 123, 128, 133, 148, 156)
S	1 (ltd), 2,4,5,7
SUP FL	D & A-Ice, LHOX 13-21Z† Tue-Fri exc hols
JASU	Mil CE15, 16, CA2
MIL ADV	438 Sqn Ops - Call "WILDCAT OPS" 322.1 135.9 450-462-8777 ext 7216 CSN 472-7216 13-21Z† Mon-Fri. Ltd trans svcg. 24 hrs PN.
PVT ADV	AvJet Distribution 123.025 450-678-4440; Pascan 131.17 888-313-8777, 450-443-0500; HUB FBO H-18 122.8 450-468-4400; LUX FBO 122.470 514-312-1885
MIL CON	Avjet Holding Inc 450-678-4440
RWY DATA	Rwy 06L(062°)/24R(242°) 7801x150 ASPH Thld 06L displ 1105'. Rwy 06R(062°)/24L(242°) 3922x100 ASPH Rwy 10(100°)/28(280°) 2420x150 ASPH
RWY CERT	Rwy 06L/24R AGN IIIB Rwy 06R/24L AGN IIIA Rwy 10/28 AGN II
TWY CERT	Twy: B, C, F, G, H, J, K, P, R, T AGN IIIA
RCR	Opr 1200-2030Z† Apr 01-Nov 30, 0330-2030Z† Mon-Fri O/T 3 hrs PN Dec 1-Mar 31. Rwy 06R/24L clsd 0400-1045Z† Mon-Fri, 0100-1045Z† Sat-Sun Dec-Mar; avbl as twy btwn Twy P and Twy R. Rwy 10/28 clsd 0400-1045Z† Mon-Fri, 0100-1045Z† Sat-Sun Dec-Mar. Hydroplaning may occur on Rwy 06L/24R (especially at intxn of twy L) dur heavy precipitation. CRFI, PLR/PCN
MIL	S50, T75, ST140, TT198.
LIGHTING	06R-(TE ME), 24L-(TE ME), 06L-AS(TE HI) P2, 24R-AN(TE HI) P2, 10-(TE HI), 28-(TE HI) ARCAL-118.4 type K for Rwy 06L/24R, PAPI & twy lgt B, C, E, J, K, M, P, R, T
COMM	(bil)
RCO	Rouyn rdo 118.4 (RAAS) 0500-1045Z† Tue-Sat, 0300-1045Z† Sun-Mon Apr-Oct; 0400-1045Z† Tue-Sat, 0100-1045Z† Sun-Mon Nov-Mar
ATIS	(English) 124.9 (French) 124.1 1045-0500Z† Mon-Fri, 1045-0300Z† Sat-Sun Apr-Oct; 1045-0400Z† Mon-Fri, 1045-0100Z† Sat-Sun Nov-Mar
GND	St-Hubert 126.4 1045-0500Z† Mon-Fri, 1045-0300Z† Sat-Sun Apr-Oct; 1045-0400Z† Mon-Fri, 1045-0100Z† Sat-Sun Nov-Mar
TWR	St-Hubert 118.4 (VFR ARR North) 121.3 (VFR ARR South and East) (V) 1045-0500Z† Mon-Fri, 1045-0300Z† Sat-Sun Apr-Oct; 1045-0400Z† Mon-Fri, 1045-0100Z† Sat-Sun Nov-Mar (emerg only 450-926-6458)
MF	Rouyn rdo 118.4 0500-1045Z† Tue-Sat, 0300-1045Z† Sun-Mon Apr-Oct; 0400-1045Z† Tue-Sat, 0100-1045Z† Sun-Mon Nov-Mar 5NM shape irregular 2000 ASL (CAR 602.98)
ARR	Montréal 125.15 268.3
DEP	Montréal 125.15 268.3
VFR ADV	Montreal Tml 134.15
MIL	438 Sqn Ops 322.1 135.9
AWOS	124.9 (English) 124.1 (French) 0500-1045Z† Tue-Sat, 0300-1045Z† Sun-Mon Apr-Oct; 0400-1045Z† Tue-Sat, 0100-1045Z† Sun-Mon Nov-Mar
NAV	
DME	IHU 111.1 Ch 48 N45 31 21 W73 24 30 (113')
ILS	IHU 111.1 (Rwy 24R) RVR LOC reliable only within 10° either side of centreline

QUEBEC

AERODROME/FACILITY DIRECTORY

MONTRÉAL / ST-HUBERT QC (Cont'd)

CYHU

PRO

Pilots should refer to Canadian Airport Charts (CAC) to obtain details on established hot spots, prior to operating on maneuvering areas. CAC are available for free on the NAV CANADA website.

Pilots are requested to avoid flight below 2000 AGL when flying over the Mont-Saint-Hilaire Migratory Bird Sanctuary (Saint-Hilaire, QC N45 33 00 W73 09 00)

Circuits: Rgt hand circuits Rwy 06R, 24R & 28 (CAR 602.96).

Preferential rwy: Btwn 04-12Z†, all acft shall, when aprt and wx conditions permitting, land on Rwy 24R and take-off Rwy 06L.

Departure: 24L rstd to single engine acft having a GTOW of less than 5000 lbs. Rwy 24L and 24R climb rwy hdg to 1100 ASL BPOC or in the circuit.

All VFR acft leaving the CZ, climb to not above 1100 ASL or as assigned by ATC.

VFR Codes: Refer to MONTRÉAL VTPC section VFR FLIGHTS IN MONTRÉAL/TRUDEAU, MONTRÉAL/ST-HUBERT, MONTRÉAL/MIRABEL AND MONTRÉAL TERMINAL CLASS C AIRSPACE.

VFR acft towards Montréal/Trudeau: Outside TWR oprg hours, VFR acft proceeding towards Montreal CZ are required to proceed via Lafontaine Tunnel at 2000 ASL or lower if necessary due wx.

Mil ramp: PPR 48 hrs 438 Sqn Ops CSN 472-7216.

Airspace: Standardized use of common freq 122.1 (north) and 122.575 (south) in Class G airspace around the CZ. CYA 627(S) aprx 20NM NE of aprt up to 3000 ASL cont daylight.

Training: VFR circuits PPR 1-800-633-1353

Training areas: See Montréal Terminal VTPC.

MONTRÉAL/ST-HUBERT CZ AIRSPACE SPLIT FOR VFR FLIGHTS

During the hours of operation of the control tower, CYHU CZ is divided into two sectors for VFR arrivals with separate frequencies:

- All VFR arrivals from VARENNES QUARRY ctc St-Hubert TWR on 118.4 (ARR VFR North).
- All VFR arrivals from CHAMBLY and ST-PHILIPPE ctc St-Hubert TWR on 121.3 (ARR VFR South and East).

VFR ARR/DEP ROUTES

All VFR aircraft should follow arrival and departure routes, unless otherwise specified by ATC.

See "VFR TERMINAL PROCEDURES CHART - ARR/DEP" for additional details.

RWY 06L/24R AND TWY CHARLIE RESTRICTIONS

When ceiling is reported at less than 500' AGL, the following restrictions apply outside of tower hours of operation:

Arr: No acft should be on twy C when an acft is established on final apch for rwy 06L/24R.

Dep: No acft should be on twy C when an acft is ready for tkof.

CIV HELI Ctc Gnd 126.4 prior to dep. Dep & arr req Marina, Tunnel, North or Tower rtes or as cleared by ATC. See HELI VTPC for rtes & alts.

MIL HELI Ctc Gnd 126.4 prior to dep. Holding bay Rwy 06L designated as ldg/tkof pad. See HELI VTPC or rtes & alts.

NOISE **Touch and go:** Pursuant to CAR 602.105, the following noise control requirements apply at Montreal/St-Hubert airport. Rwy 24L & 24R not auth Oct 1-Apr 30 24-08 hr lcl Mon-Fri, 19-08 hr lcl Sat-Sun. Rwy 24L & 24R not auth May 1-Sep 30 23-08 hr lcl Mon-Fri, 15-08 hr lcl Sat, Nil Sun & hol(s).

Noise oprg restrictions & noise abatement procedures in effect. See CAP.

CAUTION

Blasting ops: 9.5NM NE.

Beloeil A/D: lctd 8NM NE of Rwy 24. (Circuits ht 1000 ASL).

Taxiway: Due to aprt layout twy "T" may be mistaken for Rwy 24L.

Firing range: lctd 4.9NM NE of Rwy 24.

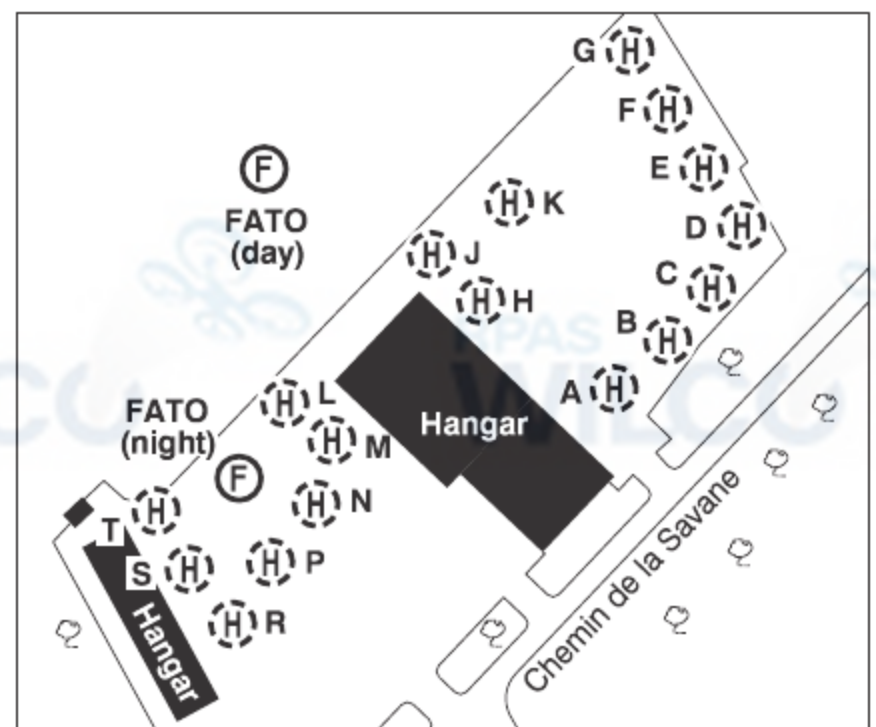
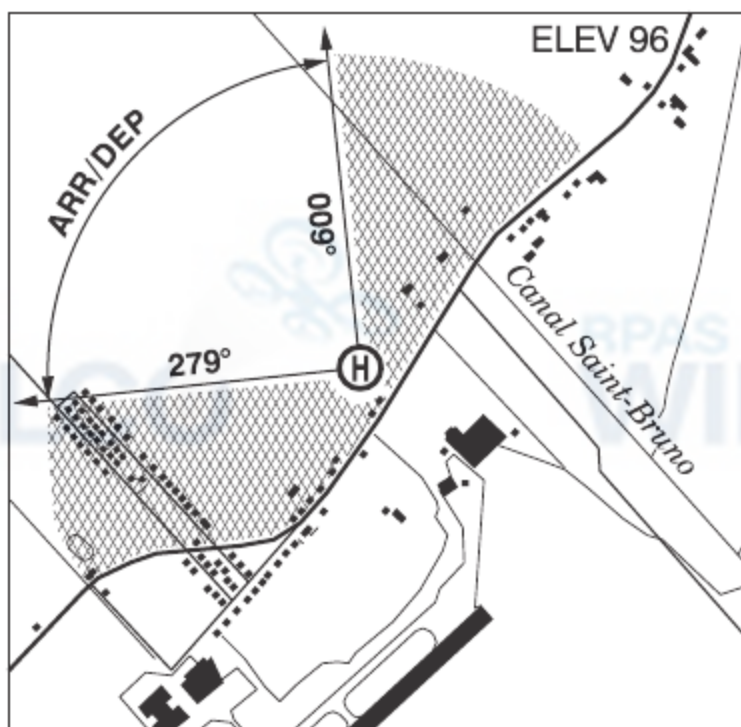
Mil Ramp: Large mag anomaly in front of the 438 Sqn hg causing mag compasses to deviate as much as 90°.

QUEBEC

AERODROME/FACILITY DIRECTORY

MONTRÉAL / ST-HUBERT HELI-INTER QC (Heli)

CTG2



REF	N45 31 54 W73 24 43 3E 15°W (2014) UTC-5(4) Elev 96' VTA A5002
OPR	Héli-Inter Inc 450-468-3431 Reg PPR
PF	B-1 avbl 12-23Z, C-2,3,4,5,6
FLT PLN	(bil)
FIC	Québec 866-GOMÉTÉO or 866-WXBRIEF (Toll free within Canada) or 866-541-4105 (Toll free within Canada & USA)
SERVICES	12-03Z PPR
FUEL	100LL, JA 514-686-7046
OIL	All
S	1 (ltd),2,3,6
HELI DATA	Day ops: FATO 120' x 120' GRASS Safety Area 135' x 135' Night ops: FATO 68' x 68' ASPH Safety Area 85' x 85' Parking Pads A-J, L & T: 43' dia ASPH Parking Pads M, N & R: 31' dia ASPH Parking Pads P & S: 39' dia ASPH Parking Pad K: 61' dia ASPH
LIGHTING	RF FH or FL All obstacles marked with reflective tape.
COMM	
RCO	Rouyn rdo (St-Hubert) 118.4 (RAAS) 0500-1045Z‡ Tue-Sat, 0300-1045Z‡ Sun-Mon Apr-Oct; 0400-1045Z‡ Tue-Sat, 0100-1045Z‡ Sun-Mon Nov-Mar
ATIS	(English) 124.9 (French) 124.1 1045-0500Z‡ Mon-Fri, 1045-0300Z‡ Sat-Sun Apr-Oct; 1045-0400Z‡ Mon-Fri, 1045-0100Z‡ Sat-Sun Nov-Mar
GND	St-Hubert 126.4 1045-0500Z‡ Mon-Fri, 1045-0300Z‡ Sat-Sun Apr-Oct; 1045-0400Z‡ Mon-Fri, 1045-0100Z‡ Sat-Sun Nov-Mar
TWR	St-Hubert 118.4 (V) 1045-0500Z‡ Mon-Fri, 1045-0300Z‡ Sat-Sun Apr-Oct; 1045-0400Z‡ Mon-Fri, 1045-0100Z‡ Sat-Sun Nov-Mar (emerg only 450-926-6458)
MF	Rouyn rdo 118.4 0500-1045Z‡ Tue-Sat, 0300-1045Z‡ Sun-Mon Apr-Oct; 0400-1045Z‡ Tue-Sat, 0100-1045Z‡ Sun-Mon Nov-Mar 5NM shape irregular centred on St-Hubert A/D adj 2000 ASL (CAR 602.98)
VFR ADV	Montréal Tml 134.15
PRO	Arr/dep btwn 279°-009° fr heli below 400 ASL(300 AGL) Arr/dep req Marina, Tunnel, North or Tower rtes or as cleared by ATC. See Montréal/St-Hubert Heli VTPC for rtes & alts. All heli must contact gnd 126.4 prior to dep.
CAUTION	Extv heli tfc in vic of apt & on helicopter/Héli-Inter touchdown pads.

QUEBEC

AERODROME/FACILITY DIRECTORY

ST-MATHIAS QC

CSP5

REF	N45 30 03 W73 14 30 1.7NE 15°W (2014) UTC-5(4) Elev 50' VTA A5002	
OPR	Aviation B. L. Inc 450-658-2041 Reg	
PF	A-1 13-22Z† C-2,3,4,5,6	
FLT PLN	(bil)	
FIC	Québec 866-GOMÉTÉO or 866-WXBRIEF (Toll free within Canada) or 866-541-4105 (Toll free within Canada & USA)	
SERVICES		
FUEL	100LL	
OIL	All	
S	1,2,3,4,5,6	
RWY DATA	Rwy 14/32 2000x50 GRVL/GRASS	
RCR	Opr 13-22Z†	
COMM		
ATF	tfc 123.2 5NM outside CYHU CZ 2000 ASL	
PRO	Training areas: See Montréal Terminal VTPC. Pilots are requested to avoid flight below 2000 AGL when flying over the Mont-Saint-Hilaire Migratory Bird Sanctuary (Saint-Hilaire, QC N45 33 00 W73 09 00).	

Canadian Aviation Regulations

Division III — General Operating and Flight Rules

For full listing please visit : <https://laws-lois.justice.gc.ca/eng/regulations/SOR-96-433/FullText.html#s-901.27>

Visual Line-of-sight

- **901.11 (1)** Subject to subsection (2), no pilot shall operate a remotely piloted aircraft system unless the pilot or a visual observer has the aircraft in visual line-of-sight at all times during flight.
- **(2)** A pilot may operate a remotely piloted aircraft system without the pilot or a visual observer having the aircraft in visual line-of-sight if the operation is conducted in accordance with a special flight operations certificate — RPAS issued under section 903.03.

Procedures

- **901.23 (1)** No pilot shall operate a remotely piloted aircraft system unless the following procedures are established:
 - **(a)** normal operating procedures, including pre-flight, take-off, launch, approach, landing and recovery procedures; and
 - **(b)** emergency procedures, including with respect to
 - **(i)** a control station failure,
 - **(ii)** an equipment failure,
 - **(iii)** a failure of the remotely piloted aircraft,
 - **(iv)** a loss of the command and control link,
 - **(v)** a fly-away, and
 - **(vi)** flight termination.
- **(2)** If the manufacturer of the remotely piloted aircraft system provides instructions with respect to the topics referred to in paragraphs (1)(a) and (b), the procedures established under subsection (1) shall reflect those instructions.
- **(3)** No pilot shall conduct the take-off or launch of a remotely piloted aircraft unless the procedures referred to in subsection (1) are reviewed before the flight by, and are immediately available to, each crew member.
- **(4)** No pilot shall operate a remotely piloted aircraft system unless the operation is conducted in accordance with the procedures referred to in subsection (1).

Site Survey

901.27 No pilot shall operate a remotely piloted aircraft system unless, before commencing operations, they determine that the site for take-off, launch, landing or recovery is suitable for the proposed operation by conducting a site survey that takes into account the following factors:

- **(a)** the boundaries of the area of operation;
- **(b)** the type of airspace and the applicable regulatory requirements;
- **(c)** the altitudes and routes to be used on the approach to and departure from the area of operation;
- **(d)** the proximity of manned aircraft operations;
- **(e)** the proximity of aerodromes, airports and heliports;
- **(f)** the location and height of obstacles, including wires, masts, buildings, cell phone towers and wind turbines;
- **(g)** the predominant weather and environmental conditions for the area of operation; and
- **(h)** the horizontal distances from persons not involved in the operation.

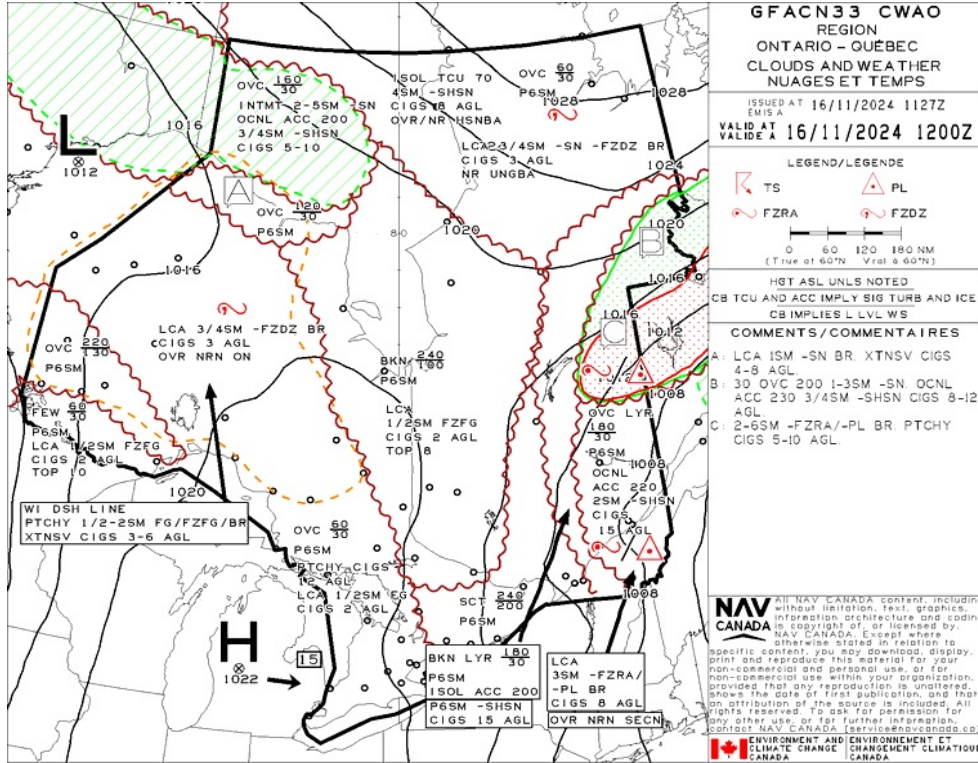
Operations at or in the Vicinity of an Aerodrome, Airport or Heliport

- **901.47 (1)** No pilot shall operate a remotely piloted aircraft at or near an aerodrome that is listed in the *Canada Flight Supplement* or the *Water Aerodrome Supplement* in a manner that could interfere with an aircraft operating in the established traffic pattern.
- **(2)** Subject to section 901.73, no pilot shall operate a remotely piloted aircraft at a distance of less than
 - **(a)** three nautical miles from the centre of an airport; and
 - **(b)** one nautical mile from the centre of a heliport.
- **(3)** No pilot shall operate a remotely piloted aircraft at a distance of less than three nautical miles from the centre of an aerodrome operated under the authority of the Minister of National Defence unless the operation is conducted in accordance with a special flight operations certificate — RPAS issued under section 903.03.

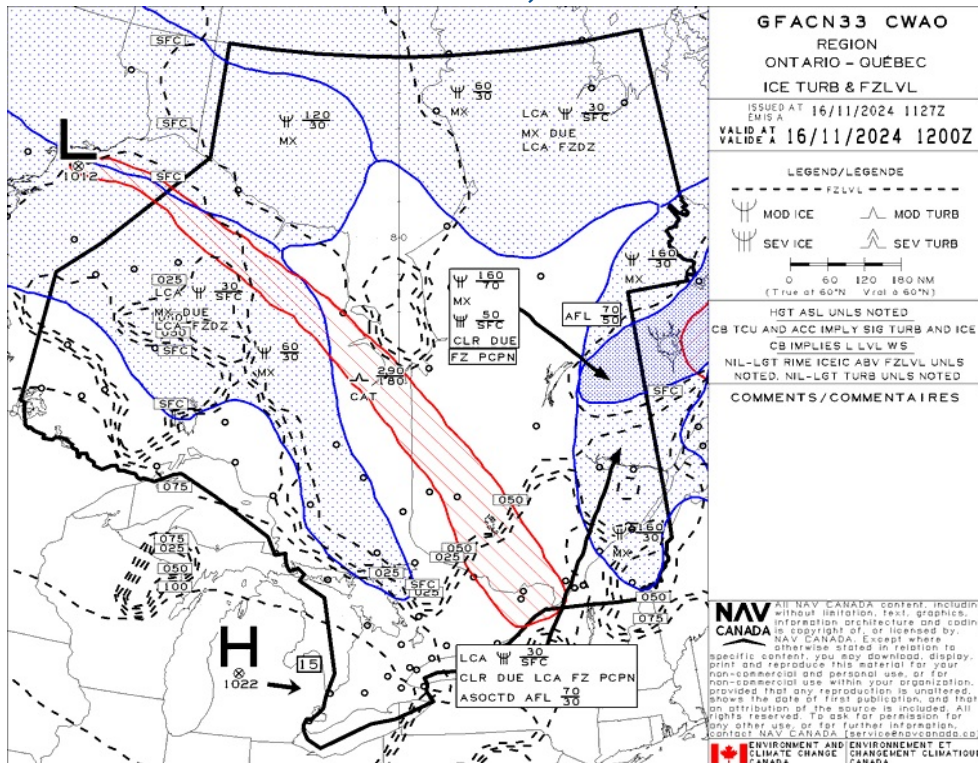
Records

- **901.48 (1)** Every owner of a remotely piloted aircraft system shall keep the following records:
 - **(a)** a record containing the names of the pilots and other crew members who are involved in each flight and, in respect of the system, the time of each flight or series of flights; and
 - **(b)** a record containing the particulars of any mandatory action and any other maintenance action, modification or repair performed on the system, including
 - **(i)** the names of the persons who performed them,
 - **(ii)** the dates they were undertaken,
 - **(iii)** in the case of a modification, the manufacturer, model and a description of the part or equipment installed to modify the system, and
 - **(iv)** if applicable, any instructions provided to complete the work.
- **(2)** Every owner of a remotely piloted aircraft system shall ensure that the records referred to in subsection (1) are made available to the Minister on request and are retained for a period of
 - **(a)** in the case of the records referred to in paragraph (1)(a), 12 months after the day on which they are created; and
 - **(b)** in the case of the records referred to in paragraph (1)(b), 24 months after the day on which they are created.
- **(3)** Every owner of a remotely piloted aircraft system who transfers ownership of the system to another person shall, at the time of transfer, also deliver to that person all of the records referred to in paragraph (1)(b).

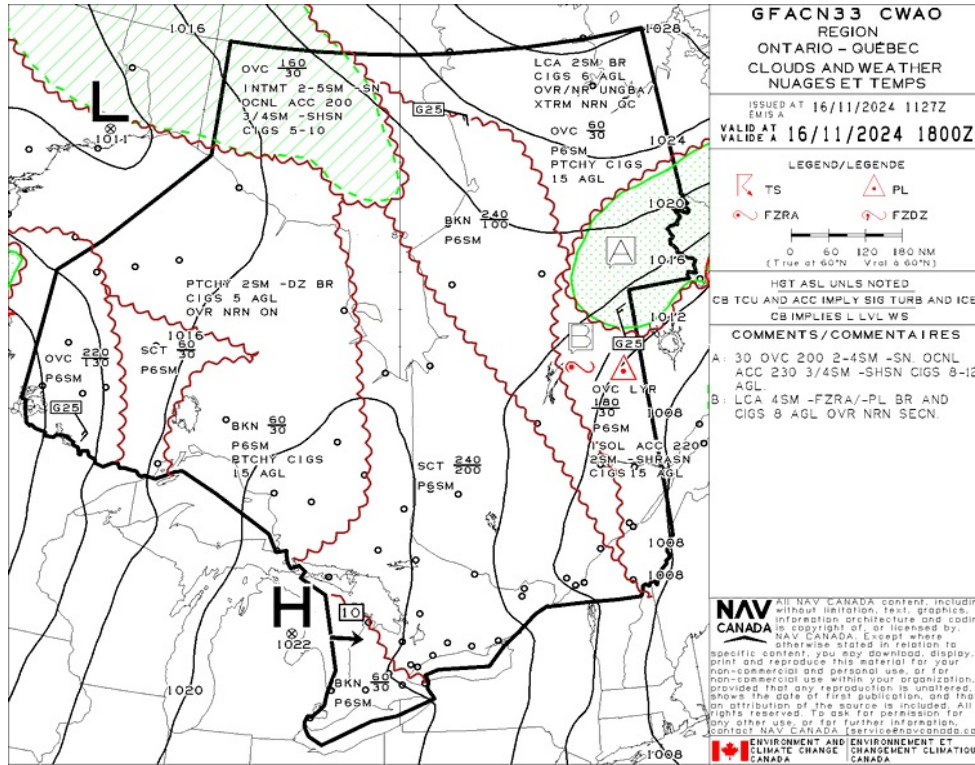
GFA Issue time + 00 hr - CLOUDS AND WEATHER



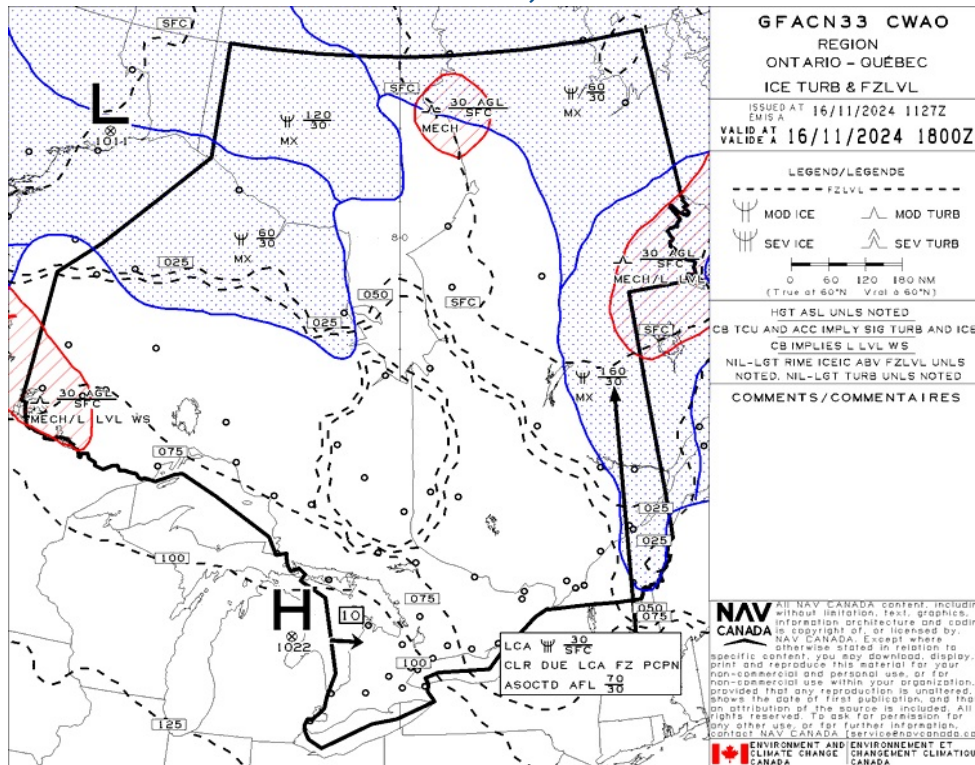
GFA Issue time + 00 hr - TURBULENCE, ICING AND FREEZING LEVEL



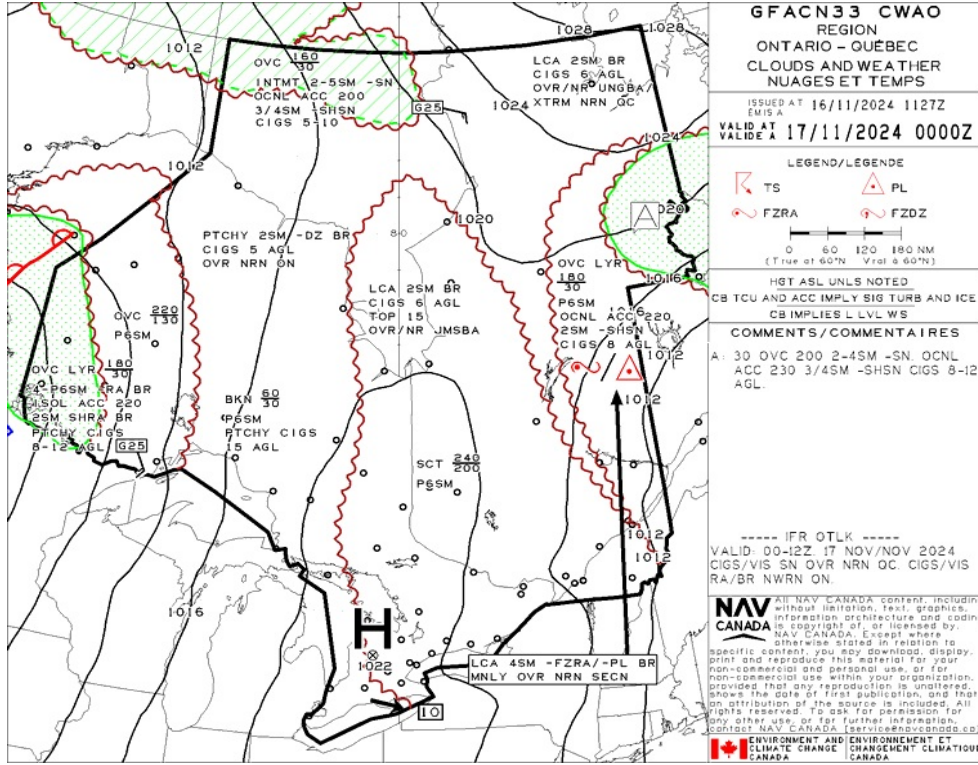
GFA Issue time + 06 hr - CLOUDS AND WEATHER



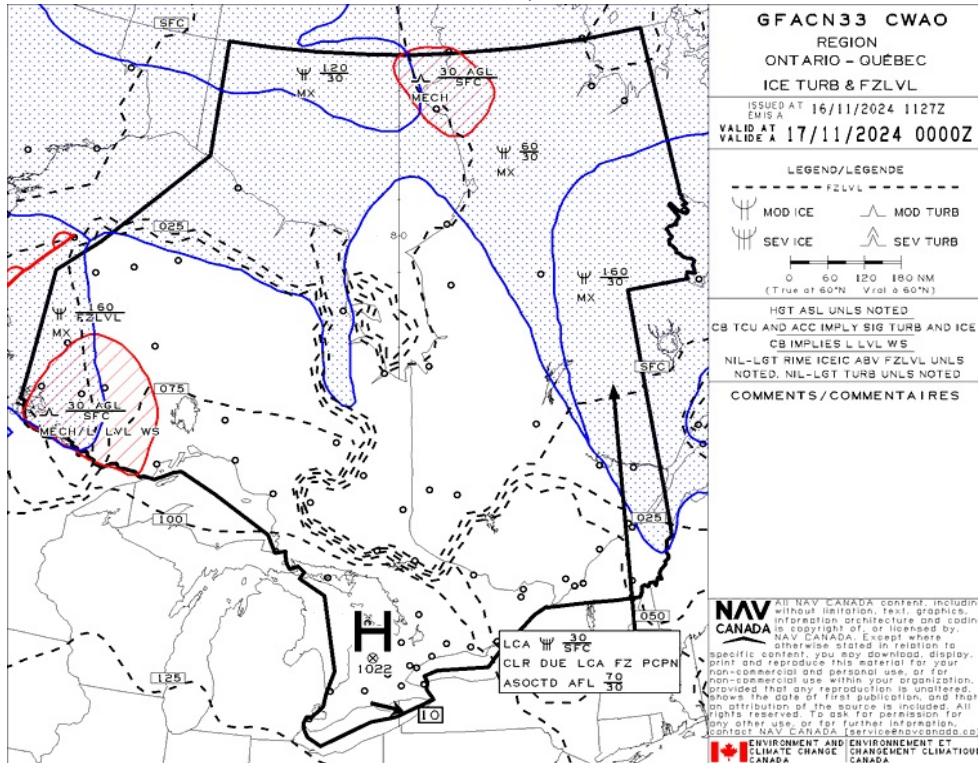
GFA Issue time + 06 hr - TURBULENCE, ICING AND FREEZING LEVEL



GFA Issue time + 12 hr - CLOUDS AND WEATHER



GFA Issue time + 12 hr - TURBULENCE, ICING AND FREEZING LEVEL



ST-MATHIEU-DE-BELOEIL (GILLES BEAUDET) - CSB3 - Reg

NOTAM

(H5495/24 NOTAMN

Q) CZUL/QXXXX/IV/NBO/E/000/280/4638N07245W250
A) CZUL B) 2411161126 C) 2411170300
E) DUE TO REDUCED SYSTEM CAPACITY, IFR TRAINING FLT NOT AUTH AND VFR FLT INCLUDING PHOTO SURVEYS CAN ANTICIPATE RESTRICTIONS AND/OR DLA UP TO 60MIN IN AIRSPACE SOUTH OF A LINE MIVOK - OTONA - IKMOL - 473402N 0704811W - 465204N 0694911W EXC IN OTTAWA, MONTREAL AND QUEBEC TERMINAL AREAS. VFR PHOTO SURVEY FLT PPR 1-800-633-1353. INFO CTC 514-633-3365

FR:

EN RAISON DE LA CAPACITE REDUITE DU SYSTEME, FLT IFR D'ENTRAINEMENT NON AUTH ET FLT VFR INCLUANT LES VOLS DE LEVES PHOTOGRAPHIQUES PEUVENT ANTICIPER DES RESTRICTIONS ET/OU DLA JUSQU'A 60MIN DANS L'ESPACE AERIEN AU SUD D'UNE LIGNE MIVOK - OTONA - IKMOL - 473402N 0704811W - 465204N 0694911W, EXC DANS LES ZONES TERMINAL D'OTTAWA, MONTREAL ET QUEBEC. TOUS FLT DE LEVES PHOTOGRAPHIQUES VFR PPR 1-800-633-1353. INFO CTC 514-633-3365)

(H5491/24 NOTAMR H5490/24

Q) CZXX/QOEXX/IV/NBO/E/000/999/5243N05321W999
A) CZQX CZQM CZUL B) 2411151800 C) 2412151600EST
E) PURSUANT TO SECTION 5.1 OF THE AERONAUTICS ACT, THE MINISTER OF TRANSPORT IS OF THE OPINION IT IS NECESSARY FOR AVIATION SAFETY AND THE PROTECTION OF THE PUBLIC TO PROHIBIT CANADIAN AIR OPERATORS AND OWNERS OF AIRCRAFT REGISTERED IN CANADA FROM OPERATING BELOW FL100 WITHIN HAITIAN AIRSPACE AND FIR PORT-AU-PRINCE (MTEG) DUE TO POTENTIAL RISK TO AVIATION FROM GANG ACTIVITY.
THE MINISTER MAY GRANT EXCEPTIONAL WAIVERS FOR HUMANITARIAN OR MEDEVAC OPERATIONS. AIR OPERATORS WISHING TO OBTAIN SUCH AN AUTHORIZATION MUST APPLY TO THE DEPARTMENT OF TRANSPORT AT 1-877-992-6853 OR 1-613-992-6853 OR BY EMAIL AT OPERATIONS.AVIATION(A)TC.GC.CA

FR:

EN VERTU DE L'ARTICLE 5.1 DE LA LOI SUR L'AERONAUTIQUE, LE MINISTRE DES TRANSPORTS EST D'AVIS QU'IL EST NECESSAIRE POUR LA SECURITE AERIENNE ET LA PROTECTION DU PUBLIC D'INTERDIRE AUX EXPLOITANTS AERIENS ET AUX PROPRIETAIRES D'AERONEFS IMMATRICULES AU CANADA D'OPERER SOUS FL100 DANS L'ESPACE AERIEN HAITIEN ET DANS LA REGION D'INFORMATION DE VOL DE PORT-AU-PRINCE (MTEG) EN RAISON DES RISQUES POTENTIELS POUR L'AVIATION DECOULANT DES ACTIVITES DES GANGS.
LE MINISTRE PEUT ACCORDER DES DEROGATIONS D'EXCEPTION POUR LES OPERATIONS HUMANITAIRES OU D'EVACUATION MEDICALE. LES EXPLOITANTS AERIENS QUI SOUHAIENT OBTENIR UNE TELLE AUTORISATION DOIVENT EN FAIRE LA DEMANDE AU MINISTERE DES TRANSPORTS AU 1-877-992-6853 OU AU 1-613-992-6853 OU PAR COURRIEL A: OPERATIONS.AVIATION(A)TC.GC.CA

(G3236/24 NOTAMN

Q) CZXX/QGWAU/IV/NBO/E/000/999/4409N07532W239
A) CZYZ CZUL B) 2411181201 C) 2411222359
D) DAILY 1201-2359
E) GPS INTERFERENCE EXER
RADIUS 239NM CENTER 440847N 0753136W FL400-UNL,
198NM RADIUS AT FL250,
139NM RADIUS AT 10000FT AMSL,
104NM RADIUS AT 4000FT AGL,
37NM RADIUS AT 50FT AGL.
GNSS SIGNAL MAY BE PERIODICALLY INTERRUPTED. INFORM ATC OF ANY ADVERSE IMPACT.

FR:

EXER D'INTERFERENCE GPS
RAYON 239NM CENTRE 440847N 0753136W FL400-UNL,
198NM RAYON A FL250,
139NM RAYON A 10000FT AMSL,
104NM RAYON A 4000FT AGL,
37NM RAYON A 50FT AGL.
LES SIGNAUX GNSS PEUVENT ETRE INTERROMPUS PERIODIQUEMENT.
INFORMER ATC DE TOUT IMPACT NEGATIF.)

(H5006/24 NOTAMR H4366/23

Q) CZXX/QADTT/IV/BO/E/000/999/5243N05321W999
A) CZUL CZQM CZQX B) 2410161344 C) 2504171600
E) TRIGGER NOTAM - AIP SUPPLEMENT 26/18 IN EFFECT. ADJUSTMENT TO THE CANADA AIR DEFENCE IDENTIFICATION ZONE (ADIZ).

FR:

NOTAM DECLENCHEUR - SUPPLEMENT D'AIP 26/18 EN VIGUEUR.
MODIFICATION DE LA ZONE D'IDENTIFICATION DE DEFENSE AERIENNE DU CANADA)

(H5004/24 NOTAMR H2424/24
Q) CZUL/QAFTT/IV/BO/E/000/100/5440N06941W999
A) CZUL B) 2410161330 C) 2504171600
E) TRIGGER NOTAM - AIP SUPPLEMENT 43/24 IN EFFECT UNTIL 10 JUN 2027
HIGH SPEED TEST FLIGHTS BELOW 10 000 FEET

FR:
NOTAM DECLENCHEUR - SUPPLEMENT D'AIP 43/24 EN VIGUEUR JUSQU'AU
10 JUN 2027 VOLS D'ESSAI A HAUTE VITESSE EN DESSOUS DE 10 000
PIEDS)

(E5862/24 NOTAMR E5016/24
Q) CZUL/QOBT/IV/BO/AE/000/005/4528N07344W031
A) CYUL B) 2410161315 C) 2504171600
E) TRIGGER NOTAM - AIP SUPPLEMENT 70/24 IN EFFECT. CRANES ERRECTED
WITHIN 30NM OF MONTREAL/PIERRE ELLIOTT TRUDEAU INTL AIRPORT

FR:
NOTAM DECLENCHEUR - SUPPLEMENT D'AIP 70/24 EN VIGUEUR. GRUES
SITUEES DANS UN RAYON DE 30 NM DE L'AEROPORT INTL
PIERRE-ELLIOTT-TRUDEAU DE MONTREAL)

(K3127/24 NOTAMN
Q) CZUL/QOBCE/IV/M/AE/000/002/4535N07314W005
A) CXXX B) 2410021500 C) 2412220500
E) CSB3 ST-MATHIEU-DE-BELOEIL (GILLES BEAUDET)
POSSIBILITY OF CONCRETE PUMP WITHIN 140FT RADIUS CENTRED ON
453518N 0731402W APRX 100FT BFR DTHR 33 AND 280FT NE EXTENDED
RCL. 153FT AGL 199FT AMSL.

FR:
CSB3 ST-MATHIEU-DE-BELOEIL (GILLES BEAUDET)
POSSIBILITE DE POMPE A BETON DANS UN RAYON DE 140FT CENTRE
453518N 0731402W APRX 100FT BFR DTHR 33 ET 280FT AU NE DU
PROLONGEMENT DE RCL. 153FT AGL 199FT AMSL.)

(H3920/24 NOTAMN
Q) CZXX/QOEXX/IV/NBO/E/000/999/5243N05321W999
A) CZUL CZQM CZQX B) 2408231347 C) 2411211600EST
E) AIRSPACE SECURITY WARNING ISSUED BY THE DEPARTMENT OF TRANSPORT
IN RESPONSE TO THE SECURITY SITUATION IN AFGHANISTAN. CANADIAN
AIR OPR AND OWNERS OF ACFT REGISTERED IN CANADA ARE RECOMMENDED
TO MAINTAIN A FLT LVL EQUAL TO OR ABV FL320, WITHIN THE KABUL
FIR (OAKX), DUE TO POTENTIAL RISK TO AVIATION FM EXTREMIST AND
MIL ACT AND LTD RISK MITIGATION CAPABILITIES. THIS NOTAM
SUPERSEDES THE ADVICE FOR AFGHANISTAN IN AIC 13/24.

FR:
AVERTISSEMENT RELATIF A LA SECURITE DE L'ESPACE AERIEN EMIS
PAR LE MINISTERE DES TRANSPORTS EN REPONSE A LA SITUATION DE
SECURITE EN AFGHANISTAN. IL EST RECOMMANDE AUX EXPLOITANTS
ACFT CANADIENS ET AUX PROPRIETAIRES D'AERONEFS IMMATRICULES
AU CANADA DE MAINTENIR UN NIVEAU DE VOL EGAL OU SUPERIEUR AU
FL320 DANS LA FIR KABUL (OAKX). RISQUE POTENTIEL LIE A
L'ACTIVITE DES EXTREMISTES ET DES MIL ET CAPACITES LIMITEES
D'ATTENUATION DES RISQUES. CE NOTAM REMPLACE LA RECOMMANDATION
S'APPLIQUANT A L'AGHANISTAN CONTENUE DANS L'AIC 13/24.)



Flight Plan & Site Survey

ST-HUBERT - CYHU - Cert

METAR

METAR CYHU 161100Z AUTO 25008KT 9SM OVC220 02/M04 A2980 RMK SLP093=

TAF

TAF CYHU 161140Z 1612/1712 25008KT P6SM BKN220
FM161500 28012KT P6SM SCT160
FM161800 26012KT P6SM SKC
BECMG 1701/1703 28008KT
RMK FCST BASED ON AUTO OBS. NXT FCST BY 161800Z=

TAF CYHU 160540Z 1606/1706 25007KT P6SM FEW220
FM161000 26008KT P6SM SCT040 BKN180
FM161500 27012KT P6SM SCT160
FM161800 26012KT P6SM SKC
BECMG 1701/1703 28008KT
RMK FCST BASED ON AUTO OBS. NXT FCST BY 161200Z=

NOTAM

(H5495/24 NOTAMN
Q) CZUL/QXXXX/IV/NBO/E/000/280/4638N07245W250
A) CZUL B) 2411161126 C) 2411170300
E) DUE TO REDUCED SYSTEM CAPACITY, IFR TRAINING FLT NOT AUTH AND VFR FLT INCLUDING PHOTO SURVEYS CAN ANTICIPATE RESTRICTIONS AND/OR DLA UP TO 60MIN IN AIRSPACE SOUTH OF A LINE MIVOK - OTONA - IKMOL - 473402N 0704811W - 465204N 0694911W EXC IN OTTAWA, MONTREAL AND QUEBEC TERMINAL AREAS. VFR PHOTO SURVEY FLT PPR 1-800-633-1353. INFO CTC 514-633-3365

FR:
EN RAISON DE LA CAPACITE REDUITE DU SYSTEME, FLT IFR D'ENTRAINEMENT NON AUTH ET FLT VFR INCLUANT LES VOLS DE LEVES PHOTOGRAPHIQUES PEUVENT ANTICIPER DES RESTRICTIONS ET/OU DLA JUSQU'A 60MIN DANS L'ESPACE AERIEN AU SUD D'UNE LIGNE MIVOK - OTONA - IKMOL - 473402N 0704811W - 465204N 0694911W, EXC DANS LES ZONES TERMINAL D'OTTAWA, MONTREAL ET QUEBEC. TOUS FLT DE LEVES PHOTOGRAPHIQUES VFR PPR 1-800-633-1353. INFO CTC 514-633-3365)

(H5491/24 NOTAMR H5490/24
Q) CZXX/QOEXX/IV/NBO/E/000/999/5243N05321W999
A) CZQX CZQM CZUL B) 2411151800 C) 2412151600EST
E) PURSUANT TO SECTION 5.1 OF THE AERONAUTICS ACT, THE MINISTER OF TRANSPORT IS OF THE OPINION IT IS NECESSARY FOR AVIATION SAFETY AND THE PROTECTION OF THE PUBLIC TO PROHIBIT CANADIAN AIR OPERATORS AND OWNERS OF AIRCRAFT REGISTERED IN CANADA FROM OPERATING BELOW FL100 WITHIN HAITIAN AIRSPACE AND FIR PORT-AU-PRINCE (MTEG) DUE TO POTENTIAL RISK TO AVIATION FROM GANG ACTIVITY.
THE MINISTER MAY GRANT EXCEPTIONAL WAIVERS FOR HUMANITARIAN OR MEDEVAC OPERATIONS. AIR OPERATORS WISHING TO OBTAIN SUCH AN AUTHORIZATION MUST APPLY TO THE DEPARTMENT OF TRANSPORT AT 1-877-992-6853 OR 1-613-992-6853 OR BY EMAIL AT OPERATIONS.AVIATION(A)TC.GC.CA

FR:
EN VERTU DE L'ARTICLE 5.1 DE LA LOI SUR L'AERONAUTIQUE, LE MINISTRE DES TRANSPORTS EST D'AVIS QU'IL EST NECESSAIRE POUR LA SECURITE AERIENNE ET LA PROTECTION DU PUBLIC D'INTERDIRE AUX EXPLOITANTS AERIENS ET AUX PROPRIETAIRES D'AERONEFS IMMATRICULES AU CANADA D'OPERER SOUS FL100 DANS L'ESPACE AERIEN HAITIEN ET DANS LA REGION D'INFORMATION DE VOL DE PORT-AU-PRINCE (MTEG) EN RAISON DES RISQUES POTENTIELS POUR L'AVIATION DECOULANT DES ACTIVITES DES GANGS.
LE MINISTRE PEUT ACCORDER DES DEROGATIONS D'EXCEPTION POUR LES OPERATIONS HUMANITAIRES OU D'EVACUATION MEDICALE. LES EXPLOITANTS AERIENS QUI SOUHAITENT OBTENIR UNE TELLE AUTORISATION DOIVENT EN FAIRE LA DEMANDE AU MINISTRE DES TRANSPORTS AU 1-877-992-6853 OU AU 1-613-992-6853 OU PAR COURRIEL A: OPERATIONS.AVIATION(A)TC.GC.CA

(H5487/24 NOTAMN
Q) CZUL/QGWAW/IV/NBO/E/000/390/4551N07735W181
A) CZUL B) 2411181400 C) 2411222100
D) NOV 18-22 1400-2100
E) GPS INTERFERENCE EXER RADIUS 180NM CENTRE 455030N 0773448W (EASTERN ONTARIO AND WESTERN QUEBEC), SFC TO 39000FT AMSL.

GNSS SIGNAL MAY BE PERIODICALLY INTERRUPTED.
INFORM ATC OF ANY ADVERSE IMPACT

FR:
EXER D'INTERFERENCE GPS RAYON 180NM CENTRE 455030N 0773448W
(EST DE L'ONTARIO ET OUEST DU QUEBEC),
SFC A 39000FT AMSL.
LES SIGNAUX GNSS PEUVENT ETRE INTERROMPUS PERIODIQUEMENT.
INFORMER ATC DE TOUT IMPACT NEGATIF.)

(G3237/24 NOTAMN
Q) CZYZ/QGWAW/IV/NBO/E/000/390/4551N07735W181
A) CZYZ B) 2411181400 C) 2411222100
D) NOV 18-22 1400-2100
E) GPS INTERFERENCE EXER RADIUS 180NM CENTRE 455030N 0773448W
(EASTERN ONTARIO AND WESTERN QUEBEC),
SFC TO 39000FT AMSL.
GNSS SIGNAL MAY BE PERIODICALLY INTERRUPTED.
INFORM ATC OF ANY ADVERSE IMPACT)

(G3236/24 NOTAMN
Q) CZXX/QGWAW/IV/NBO/E/000/999/4409N07532W239
A) CZYZ CZUL B) 2411181201 C) 2411222359
D) DAILY 1201-2359
E) GPS INTERFERENCE EXER
RADIUS 239NM CENTER 440847N 0753136W FL400-UNL,
198NM RADIUS AT FL250,
139NM RADIUS AT 10000FT AMSL,
104NM RADIUS AT 4000FT AGL,
37NM RADIUS AT 50FT AGL.
GNSS SIGNAL MAY BE PERIODICALLY INTERRUPTED. INFORM ATC OF ANY
ADVERSE IMPACT.

FR:
EXER D'INTERFERENCE GPS
RAYON 239NM CENTRE 440847N 0753136W FL400-UNL,
198NM RAYON A FL250,
139NM RAYON A 10000FT AMSL,
104NM RAYON A 4000FT AGL,
37NM RAYON A 50FT AGL.
LES SIGNAUX GNSS PEUVENT ETRE INTERROMPUS PERIODIQUEMENT.
INFORMER ATC DE TOUT IMPACT NEGATIF.)

(E6490/24 NOTAMR E5028/24
Q) CZUL/QMRLT/IV/NBO/A/000/999/4531N07325W005
A) CYHU B) 2411111657 C) 2412051800
E) RWY 06R/24L AVBL FOR TWIN ENGINE AND
ACFT ABV 5000 POUNDS GTOW

FR:
RWY 06R/24L AVBL POUR BI MOTEUR ET
ACFT AVEC GTOW SUPERIEUR A 5000 LIVRES)

(E6459/24 NOTAMR E6399/24
Q) CZUL/QMXLC/IV/BO/A/000/999/4531N07325W005
A) CYHU B) 2411082014 C) 2412082100
E) TWY K BTN THR 06R AND HANDFIELD AVIATION CLSD.
ACCESS AVBL TO HANDFIELD AND GMR

FR:
TWY K BTN THR 06R ET HANDFIELD AVIATION CLSD.
ACCES AVBL A HANDFIELD ET GMR)

(E6458/24 NOTAMR E6400/24
Q) CZUL/QLYAS/IV/M/A/000/999/4531N07325W005
A) CYHU B) 2411082012 C) 2412082100
E) TWY K EDGE LGT U/S

FR:
LGT BORD TWY K U/S)

(E6398/24 NOTAMR E4424/24
Q) CZUL/QMRLC/IV/NBO/A/000/999/4531N07325W005
A) CYHU B) 2411061540 C) 2502061530
E) RWY 10/28 CLSD AVBL AS TWY.

FR:
RWY 10/28 CLSD AVBL COMME TWY.)

(V1283/24 NOTAMN
Q) CZUL/QOLAS/IV/M/AE/000/003/4533N07323W005
A) CYHU B) 2411030425 C) 2502012359
E) OBST LGT U/S TOWER 453239N 0732242W (APRX 2.3NM ENE AD) 150FT
AGL, 240FT AMSL.

FR:
OBST LGT U/S TOUR 453239N 0732242W (APRX 2.3NM ENE AD) 150FT AGL,
240FT AMSL.)

(V1279/24 NOTAMN
Q) CZUL/QOLAS/IV/M/AE/000/003/4535N07328W005
A) CYHU B) 2411021033 C) 2501312359
E) OBST LGT U/S CRANE 453455N 0732825W (APRX 4.5NM NNW AD) 246FT
AGL, 282FT AMSL.

FR:
OBST LGT U/S GRUE 453455N 0732825W (APRX 4.5NM NNW AD) 246FT AGL,
282FT AMSL.)

(E6223/24 NOTAMN
Q) CZUL/QFATT/IV/BO/A/000/999/4531N07325W005
A) CYHU B) 2410311302 C) 2504171600
E) TRIGGER NOTAM - AIP SUPPLEMENT 87/24 IN EFFECT. QUEBEC REGION -
SAINT-HUBERT AIRPORT (CYHU) MULTIPLE CONSTRUCTION PROJECTS

FR:
NOTAM DECLENCHEUR - SUPPLEMENT D'AIP 87/24 EN VIGUEUR. QUEBEC
REGION - SAINT-HUBERT AIRPORT (CYHU) MULTIPLES CONSTRUCTIONS
PROJECTS)

(E6209/24 NOTAMN
Q) CZUL/QFWAS/IV/M/A/000/999/4531N07325W005
A) CYHU B) 2410301916 C) 2501301900
E) WDI THR 06R U/S

FR:
WDI THR 06R U/S)

(E6104/24 NOTAMN
Q) CZUL/QMXXX/IV/M/A/000/999/4531N07325W005
A) CYHU B) 2410282100 C) PERM
E) AMEND PUBLICATIONS: TWY B AND TWY C: AGN TO READ: IIIB

FR:
MODIFIER PUBLICATIONS: TWY B ET TWY C: AGN DEVRAIT LIRE: IIIB)

(E6059/24 NOTAMR E6057/24
Q) CZUL/QFAXX/IV/NBO/A/000/999/4531N07325W005
A) CYHU B) 2410241745 C) 2501231800EST
E) TOUCH AND GO NOT AUTH WHEN TWR CLSD

FR:
POSE ET DECOLLE NON AUTH QUAND LA TWR CLSD)

(H5006/24 NOTAMR H4366/23
Q) CZXX/QADTT/IV/BO/E/000/999/5243N05321W999
A) CZUL CZQM CZQX B) 2410161344 C) 2504171600
E) TRIGGER NOTAM - AIP SUPPLEMENT 26/18 IN EFFECT. ADJUSTMENT TO THE
CANADA AIR DEFENCE IDENTIFICATION ZONE (ADIZ).

FR:
NOTAM DECLENCHEUR - SUPPLEMENT D'AIP 26/18 EN VIGUEUR.
MODIFICATION DE LA ZONE D'IDENTIFICATION DE DEFENSE AERIENNE DU
CANADA)

(H5004/24 NOTAMR H2424/24
Q) CZUL/QAFTT/IV/BO/E/000/100/5440N06941W999
A) CZUL B) 2410161330 C) 2504171600
E) TRIGGER NOTAM - AIP SUPPLEMENT 43/24 IN EFFECT UNTIL 10 JUN 2027
HIGH SPEED TEST FLIGHTS BELOW 10 000 FEET

FR:
NOTAM DECLENCHEUR - SUPPLEMENT D'AIP 43/24 EN VIGUEUR JUSQU'AU
10 JUN 2027 VOLS D'ESSAI A HAUTE VITESSE EN DESSOUS DE 10 000
PIEDS)

(E5862/24 NOTAMR E5016/24
Q) CZUL/QOBT/IV/BO/AE/000/005/4528N07344W031
A) CYUL B) 2410161315 C) 2504171600
E) TRIGGER NOTAM - AIP SUPPLEMENT 70/24 IN EFFECT. CRANES ERRECTED
WITHIN 30NM OF MONTREAL/PIERRE ELLIOTT TRUDEAU INTL AIRPORT

FR:
NOTAM DECLENCHEUR - SUPPLEMENT D'AIP 70/24 EN VIGUEUR. GRUES
SITUEES DANS UN RAYON DE 30 NM DE L'AEROPORT INTL
PIERRE-ELLIOTT-TRUDEAU DE MONTREAL)

(E5353/24 NOTAMR E5276/24
Q) CZUL/QMXLC/IV/M/A/000/999/4531N07325W005
A) CYHU B) 2409201358 C) 2412201400
E) TWY K BTN RWY 06L AND CPAQ CLSD.

FR:
TWY K BTN RWY 06L ET CPAQ CLSD.)

(E5213/24 NOTAMR E5045/24
Q) CZUL/QPIAU/I/NBO/A/000/999/4531N07325W005
A) CYHU B) 2409131821 C) 2412131800EST
E) DUE CONST:
RNAV (GNSS) RWY 06R APCH: NOT AUTH
.
RNAV (GNSS) RWY 24L APCH: NOT AUTH

FR:
EN RAISON DE CONST:
APCH RNAV (GNSS) PISTE 06R: NON AUTH
.
APCH RNAV (GNSS) PISTE 24L: NON AUTH)

(V1091/24 NOTAMN
Q) CZUL/QOLAS/IV/M/AE/000/003/4529N07331W005
A) CYHU B) 2409130416 C) 2412122359
E) OBST LGT U/S TOWER 452918N 0733125W (APRX 4.8NM W AD) 226FT AGL,
273FT AMSL.

FR:
OBST LGT U/S TOUR 452918N 0733125W (APRX 4.8NM W AD) 226FT AGL,
273FT AMSL.)

(E5144/24 NOTAMR E3433/24
Q) CZUL/QMRLT/IV/NBO/A/000/999/4531N07325W005
A) CYHU B) 2409111319 C) 2412121300
E) RWY 06R/24L AVBL FOR ACFT WINGSPAN LESS THAN 24M (78FT) ONLY

FR:
RWY 06R/24L AVBL POUR ACFT ENVERGURE MOINS DE 24M (78FT)
SEULEMENT)

(E5027/24 NOTAMR E3253/24
Q) CZUL/QMXXX/IV/M/A/000/999/4531N07325W005
A) CYHU B) 2409051749 C) 2412051800
E) TWY B FIRST 500FT FM ENA UNCONTROLLED

FR:
TWY B PREMIER 500FT FM DE L'ENA NON CONTROLLE)

(H3920/24 NOTAMN
Q) CZXX/QOEXX/IV/NBO/E/000/999/5243N05321W999

A) CZUL CZQM CZQX B) 2408231347 C) 2411211600EST
E) AIRSPACE SECURITY WARNING ISSUED BY THE DEPARTMENT OF TRANSPORT
IN RESPONSE TO THE SECURITY SITUATION IN AFGHANISTAN. CANADIAN
AIR OPR AND OWNERS OF ACFT REGISTERED IN CANADA ARE RECOMMENDED
TO MAINTAIN A FLT LVL EQUAL TO OR ABV FL320, WITHIN THE KABUL
FIR (OAKX), DUE TO POTENTIAL RISK TO AVIATION FM EXTREMIST AND
MIL ACT AND LTD RISK MITIGATION CAPABILITIES. THIS NOTAM
SUPERSEDES THE ADVICE FOR AFGHANISTAN IN AIC 13/24.

FR:
AVERTISSEMENT RELATIF A LA SECURITE DE L'ESPACE AERIEN EMIS
PAR LE MINISTERE DES TRANSPORTS EN REPOSE A LA SITUATION DE
SECURITE EN AFGHANISTAN. IL EST RECOMMANDE AUX EXPLOITANTS
ACFT CANADIENS ET AUX PROPRIETAIRES D'AERONEFS IMMATICULES
AU CANADA DE MAINTENIR UN NIVEAU DE VOL EGAL OU SUPERIEUR AU
FL320 DANS LA FIR KABUL (OAKX). RISQUE POTENTIEL LIE A
L'ACTIVITE DES EXTREMISTES ET DES MIL ET CAPACITES LIMITEES
D'ATTENUATION DES RISQUES. CE NOTAM REMPLACE LA RECOMMANDATION
S'APPLIQUANT A L'AGHANISTAN CONTENUE DANS L'AIC 13/24.)

ST-MATHIAS - CSV9 -

NOTAM

(H5495/24 NOTAMN

Q) CZUL/QXXXX/IV/NBO/E/000/280/4638N07245W250

A) CZUL B) 2411161126 C) 2411170300

E) DUE TO REDUCED SYSTEM CAPACITY, IFR TRAINING FLT NOT AUTH AND VFR FLT INCLUDING PHOTO SURVEYS CAN ANTICIPATE RESTRICTIONS AND/OR DLA UP TO 60MIN IN AIRSPACE SOUTH OF A LINE MIVOK - OTONA - IKMOL - 473402N 0704811W - 465204N 0694911W EXC IN OTTAWA, MONTREAL AND QUEBEC TERMINAL AREAS. VFR PHOTO SURVEY FLT PPR 1-800-633-1353. INFO CTC 514-633-3365

FR:

EN RAISON DE LA CAPACITE REDUITE DU SYSTEME, FLT IFR D'ENTRAINEMENT NON AUTH ET FLT VFR INCLUANT LES VOLS DE LEVES PHOTOGRAPHIQUES PEUVENT ANTICIPER DES RESTRICTIONS ET/OU DLA JUSQU'A 60MIN DANS L'ESPACE AERIEN AU SUD D'UNE LIGNE MIVOK - OTONA - IKMOL - 473402N 0704811W - 465204N 0694911W, EXC DANS LES ZONES TERMINAL D'OTTAWA, MONTREAL ET QUEBEC. TOUS FLT DE LEVES PHOTOGRAPHIQUES VFR PPR 1-800-633-1353. INFO CTC 514-633-3365)

(H5491/24 NOTAMR H5490/24

Q) CZXX/QOEXX/IV/NBO/E/000/999/5243N05321W999

A) CZQX CZQM CZUL B) 2411151800 C) 2412151600EST

E) PURSUANT TO SECTION 5.1 OF THE AERONAUTICS ACT, THE MINISTER OF TRANSPORT IS OF THE OPINION IT IS NECESSARY FOR AVIATION SAFETY AND THE PROTECTION OF THE PUBLIC TO PROHIBIT CANADIAN AIR OPERATORS AND OWNERS OF AIRCRAFT REGISTERED IN CANADA FROM OPERATING BELOW FL100 WITHIN HAITIAN AIRSPACE AND FIR PORT-AU-PRINCE (MTEG) DUE TO POTENTIAL RISK TO AVIATION FROM GANG ACTIVITY.

THE MINISTER MAY GRANT EXCEPTIONAL WAIVERS FOR HUMANITARIAN OR MEDEVAC OPERATIONS. AIR OPERATORS WISHING TO OBTAIN SUCH AN AUTHORIZATION MUST APPLY TO THE DEPARTMENT OF TRANSPORT AT 1-877-992-6853 OR 1-613-992-6853 OR BY EMAIL AT OPERATIONS.AVIATION(A)TC.GC.CA

FR:

EN VERTU DE L'ARTICLE 5.1 DE LA LOI SUR L'AERONAUTIQUE, LE MINISTRE DES TRANSPORTS EST D'AVIS QU'IL EST NECESSAIRE POUR LA SECURITE AERIENNE ET LA PROTECTION DU PUBLIC D'INTERDIRE AUX EXPLOITANTS AERIENS ET AUX PROPRIETAIRES D'AERONEFS IMMATRICULES AU CANADA D'OPERER SOUS FL100 DANS L'ESPACE AERIEN HAITIEN ET DANS LA REGION D'INFORMATION DE VOL DE PORT-AU-PRINCE (MTEG) EN RAISON DES RISQUES POTENTIELS POUR L'AVIATION DECOULANT DES ACTIVITES DES GANGS.

LE MINISTRE PEUT ACCORDER DES DEROGATIONS D'EXCEPTION POUR LES OPERATIONS HUMANITAIRES OU D'EVACUATION MEDICALE. LES EXPLOITANTS AERIENS QUI SOUHAIENT OBTENIR UNE TELLE AUTORISATION DOIVENT EN FAIRE LA DEMANDE AU MINISTERE DES TRANSPORTS AU 1-877-992-6853 OU AU 1-613-992-6853 OU PAR COURRIEL A: OPERATIONS.AVIATION(A)TC.GC.CA)

(G3236/24 NOTAMN

Q) CZXX/QGWAU/IV/NBO/E/000/999/4409N07532W239

A) CZYZ CZUL B) 2411181201 C) 2411222359

D) DAILY 1201-2359

E) GPS INTERFERENCE EXER

RADIUS 239NM CENTER 440847N 0753136W FL400-UNL,

198NM RADIUS AT FL250,

139NM RADIUS AT 10000FT AMSL,

104NM RADIUS AT 4000FT AGL,

37NM RADIUS AT 50FT AGL.

GNSS SIGNAL MAY BE PERIODICALLY INTERRUPTED. INFORM ATC OF ANY ADVERSE IMPACT.

FR:

EXER D'INTERFERENCE GPS

RAYON 239NM CENTRE 440847N 0753136W FL400-UNL,

198NM RAYON A FL250,

139NM RAYON A 10000FT AMSL,

104NM RAYON A 4000FT AGL,

37NM RAYON A 50FT AGL.

LES SIGNAUX GNSS PEUVENT ETRE INTERROMPUS PERIODIQUEMENT. INFORMER ATC DE TOUT IMPACT NEGATIF.)

(H5006/24 NOTAMR H4366/23

Q) CZXX/QADTT/IV/BO/E/000/999/5243N05321W999

A) CZUL CZQM CZQX B) 2410161344 C) 2504171600

E) TRIGGER NOTAM - AIP SUPPLEMENT 26/18 IN EFFECT. ADJUSTMENT TO THE CANADA AIR DEFENCE IDENTIFICATION ZONE (ADIZ).

FR:

NOTAM DECLENCHEUR - SUPPLEMENT D'AIP 26/18 EN VIGUEUR.

MODIFICATION DE LA ZONE D'IDENTIFICATION DE DEFENSE AERIENNE DU CANADA)

(H5004/24 NOTAMR H2424/24
Q) CZUL/QAFTT/IV/BO/E/000/100/5440N06941W999
A) CZUL B) 2410161330 C) 2504171600
E) TRIGGER NOTAM - AIP SUPPLEMENT 43/24 IN EFFECT UNTIL 10 JUN 2027
HIGH SPEED TEST FLIGHTS BELOW 10 000 FEET

FR:
NOTAM DECLENCHEUR - SUPPLEMENT D'AIP 43/24 EN VIGUEUR JUSQU'AU
10 JUN 2027 VOLS D'ESSAI A HAUTE VITESSE EN DESSOUS DE 10 000
PIEDS)

(E5862/24 NOTAMR E5016/24
Q) CZUL/QOBT/IV/BO/AE/000/005/4528N07344W031
A) CYUL B) 2410161315 C) 2504171600
E) TRIGGER NOTAM - AIP SUPPLEMENT 70/24 IN EFFECT. CRANES ERRECTED
WITHIN 30NM OF MONTREAL/PIERRE ELLIOTT TRUDEAU INTL AIRPORT

FR:
NOTAM DECLENCHEUR - SUPPLEMENT D'AIP 70/24 EN VIGUEUR. GRUES
SITUEES DANS UN RAYON DE 30 NM DE L'AEROPORT INTL
PIERRE-ELLIOTT-TRUDEAU DE MONTREAL)

(K3127/24 NOTAMN
Q) CZUL/QOBCE/IV/M/AE/000/002/4535N07314W005
A) CXXX B) 2410021500 C) 2412220500
E) CSB3 ST-MATHIEU-DE-BELOEIL (GILLES BEAUDET)
POSSIBILITY OF CONCRETE PUMP WITHIN 140FT RADIUS CENTRED ON
453518N 0731402W APRX 100FT BFR DTHR 33 AND 280FT NE EXTENDED
RCL. 153FT AGL 199FT AMSL.

FR:
CSB3 ST-MATHIEU-DE-BELOEIL (GILLES BEAUDET)
POSSIBILITE DE POMPE A BETON DANS UN RAYON DE 140FT CENTRE
453518N 0731402W APRX 100FT BFR DTHR 33 ET 280FT AU NE DU
PROLONGEMENT DE RCL. 153FT AGL 199FT AMSL.)

(H3920/24 NOTAMN
Q) CZXX/QOEXX/IV/NBO/E/000/999/5243N05321W999
A) CZUL CZQM CZQX B) 2408231347 C) 2411211600EST
E) AIRSPACE SECURITY WARNING ISSUED BY THE DEPARTMENT OF TRANSPORT
IN RESPONSE TO THE SECURITY SITUATION IN AFGHANISTAN. CANADIAN
AIR OPR AND OWNERS OF ACFT REGISTERED IN CANADA ARE RECOMMENDED
TO MAINTAIN A FLT LVL EQUAL TO OR ABV FL320, WITHIN THE KABUL
FIR (OAKX), DUE TO POTENTIAL RISK TO AVIATION FM EXTREMIST AND
MIL ACT AND LTD RISK MITIGATION CAPABILITIES. THIS NOTAM
SUPERSEDES THE ADVICE FOR AFGHANISTAN IN AIC 13/24.

FR:
AVERTISSEMENT RELATIF A LA SECURITE DE L'ESPACE AERIEN EMIS
PAR LE MINISTERE DES TRANSPORTS EN REPONSE A LA SITUATION DE
SECURITE EN AFGHANISTAN. IL EST RECOMMANDE AUX EXPLOITANTS
ACFT CANADIENS ET AUX PROPRIETAIRES D'AERONEFS IMMATRICULES
AU CANADA DE MAINTENIR UN NIVEAU DE VOL EGAL OU SUPERIEUR AU
FL320 DANS LA FIR KABUL (OAKX). RISQUE POTENTIEL LIE A
L'ACTIVITE DES EXTREMISTES ET DES MIL ET CAPACITES LIMITEES
D'ATTENUATION DES RISQUES. CE NOTAM REMPLACE LA RECOMMANDATION
S'APPLIQUANT A L'AGHANISTAN CONTENUE DANS L'AIC 13/24.)

ST-HUBERT HELI-INTER - CTG2 - Reg

NOTAM

(H5495/24 NOTAMN

Q) CZUL/QXXXX/IV/NBO/E/000/280/4638N07245W250
A) CZUL B) 2411161126 C) 2411170300
E) DUE TO REDUCED SYSTEM CAPACITY, IFR TRAINING FLT NOT AUTH AND VFR FLT INCLUDING PHOTO SURVEYS CAN ANTICIPATE RESTRICTIONS AND/OR DLA UP TO 60MIN IN AIRSPACE SOUTH OF A LINE MIVOK - OTONA - IKMOL - 473402N 0704811W - 465204N 0694911W EXC IN OTTAWA, MONTREAL AND QUEBEC TERMINAL AREAS. VFR PHOTO SURVEY FLT PPR 1-800-633-1353. INFO CTC 514-633-3365

FR:

EN RAISON DE LA CAPACITE REDUITE DU SYSTEME, FLT IFR D'ENTRAINEMENT NON AUTH ET FLT VFR INCLUANT LES VOLS DE LEVES PHOTOGRAPHIQUES PEUVENT ANTICIPER DES RESTRICTIONS ET/OU DLA JUSQU'A 60MIN DANS L'ESPACE AERIEN AU SUD D'UNE LIGNE MIVOK - OTONA - IKMOL - 473402N 0704811W - 465204N 0694911W, EXC DANS LES ZONES TERMINAL D'OTTAWA, MONTREAL ET QUEBEC. TOUS FLT DE LEVES PHOTOGRAPHIQUES VFR PPR 1-800-633-1353. INFO CTC 514-633-3365)

(H5491/24 NOTAMR H5490/24

Q) CZXX/QOEXX/IV/NBO/E/000/999/5243N05321W999
A) CZQX CZQM CZUL B) 2411151800 C) 2412151600EST
E) PURSUANT TO SECTION 5.1 OF THE AERONAUTICS ACT, THE MINISTER OF TRANSPORT IS OF THE OPINION IT IS NECESSARY FOR AVIATION SAFETY AND THE PROTECTION OF THE PUBLIC TO PROHIBIT CANADIAN AIR OPERATORS AND OWNERS OF AIRCRAFT REGISTERED IN CANADA FROM OPERATING BELOW FL100 WITHIN HAITIAN AIRSPACE AND FIR PORT-AU-PRINCE (MTEG) DUE TO POTENTIAL RISK TO AVIATION FROM GANG ACTIVITY.
THE MINISTER MAY GRANT EXCEPTIONAL WAIVERS FOR HUMANITARIAN OR MEDEVAC OPERATIONS. AIR OPERATORS WISHING TO OBTAIN SUCH AN AUTHORIZATION MUST APPLY TO THE DEPARTMENT OF TRANSPORT AT 1-877-992-6853 OR 1-613-992-6853 OR BY EMAIL AT OPERATIONS.AVIATION(A)TC.GC.CA

FR:

EN VERTU DE L'ARTICLE 5.1 DE LA LOI SUR L'AERONAUTIQUE, LE MINISTRE DES TRANSPORTS EST D'AVIS QU'IL EST NECESSAIRE POUR LA SECURITE AERIENNE ET LA PROTECTION DU PUBLIC D'INTERDIRE AUX EXPLOITANTS AERIENS ET AUX PROPRIETAIRES D'AERONEFS IMMATRICULES AU CANADA D'OPERER SOUS FL100 DANS L'ESPACE AERIEN HAITIEN ET DANS LA REGION D'INFORMATION DE VOL DE PORT-AU-PRINCE (MTEG) EN RAISON DES RISQUES POTENTIELS POUR L'AVIATION DECOULANT DES ACTIVITES DES GANGS.
LE MINISTRE PEUT ACCORDER DES DEROGATIONS D'EXCEPTION POUR LES OPERATIONS HUMANITAIRES OU D'EVACUATION MEDICALE. LES EXPLOITANTS AERIENS QUI SOUHAIENT OBTENIR UNE TELLE AUTORISATION DOIVENT EN FAIRE LA DEMANDE AU MINISTRE DES TRANSPORTS AU 1-877-992-6853 OU AU 1-613-992-6853 OU PAR COURRIEL A: OPERATIONS.AVIATION(A)TC.GC.CA

(H5487/24 NOTAMN

Q) CZUL/QGWAU/IV/NBO/E/000/390/4551N07735W181
A) CZUL B) 2411181400 C) 2411222100
D) NOV 18-22 1400-2100
E) GPS INTERFERENCE EXER RADIUS 180NM CENTRE 455030N 0773448W (EASTERN ONTARIO AND WESTERN QUEBEC), SFC TO 39000FT AMSL.
GNSS SIGNAL MAY BE PERIODICALLY INTERRUPTED.
INFORM ATC OF ANY ADVERSE IMPACT

FR:

EXER D'INTERFERENCE GPS RAYON 180NM CENTRE 455030N 0773448W (EST DE L'ONTARIO ET OUEST DU QUEBEC), SFC A 39000FT AMSL.
LES SIGNAUX GNSS PEUVENT ETRE INTERROMPUS PERIODIQUEMENT.
INFORMER ATC DE TOUT IMPACT NEGATIF.)

(G3237/24 NOTAMN

Q) CZYZ/QGWAU/IV/NBO/E/000/390/4551N07735W181
A) CZYZ B) 2411181400 C) 2411222100
D) NOV 18-22 1400-2100
E) GPS INTERFERENCE EXER RADIUS 180NM CENTRE 455030N 0773448W (EASTERN ONTARIO AND WESTERN QUEBEC), SFC TO 39000FT AMSL.
GNSS SIGNAL MAY BE PERIODICALLY INTERRUPTED.
INFORM ATC OF ANY ADVERSE IMPACT)

(G3236/24 NOTAMN

Q) CZXX/QGWAU/IV/NBO/E/000/999/4409N07532W239
A) CZYZ CZUL B) 2411181201 C) 2411222359
D) DAILY 1201-2359
E) GPS INTERFERENCE EXER
RADIUS 239NM CENTER 440847N 0753136W FL400-UNL,

198NM RADIUS AT FL250,
139NM RADIUS AT 10000FT AMSL,
104NM RADIUS AT 4000FT AGL,
37NM RADIUS AT 50FT AGL.
GNSS SIGNAL MAY BE PERIODICALLY INTERRUPTED. INFORM ATC OF ANY
ADVERSE IMPACT.

FR:
EXER D'INTERFERENCE GPS
RAYON 239NM CENTRE 440847N 0753136W FL400-UNL,
198NM RAYON A FL250,
139NM RAYON A 10000FT AMSL,
104NM RAYON A 4000FT AGL,
37NM RAYON A 50FT AGL.
LES SIGNAUX GNSS PEUVENT ETRE INTERROMPUS PERIODIQUEMENT.
INFORMER ATC DE TOUT IMPACT NEGATIF.)

(E6490/24 NOTAMR E5028/24
Q) CZUL/QMRLT/IV/NBO/A/000/999/4531N07325W005
A) CYHU B) 2411111657 C) 2412051800
E) RWY 06R/24L AVBL FOR TWIN ENGINE AND
ACFT ABV 5000 POUNDS GTOW

FR:
RWY 06R/24L AVBL POUR BI MOTEUR ET
ACFT AVEC GTOW SUPERIEUR A 5000 LIVRES)

(E6459/24 NOTAMR E6399/24
Q) CZUL/QMXLC/IV/BO/A/000/999/4531N07325W005
A) CYHU B) 2411082014 C) 2412082100
E) TWY K BTN THR 06R AND HANDFIELD AVIATION CLSD.
ACCESS AVBL TO HANDFIELD AND GMR

FR:
TWY K BTN THR 06R ET HANDFIELD AVIATION CLSD.
ACCES AVBL A HANDFIELD ET GMR)

(E6458/24 NOTAMR E6400/24
Q) CZUL/QLYAS/IV/M/A/000/999/4531N07325W005
A) CYHU B) 2411082012 C) 2412082100
E) TWY K EDGE LGT U/S

FR:
LGT BORD TWY K U/S)

(E6398/24 NOTAMR E4424/24
Q) CZUL/QMRLC/IV/NBO/A/000/999/4531N07325W005
A) CYHU B) 2411061540 C) 2502061530
E) RWY 10/28 CLSD AVBL AS TWY.

FR:
RWY 10/28 CLSD AVBL COMME TWY.)

(V1283/24 NOTAMN
Q) CZUL/QOLAS/IV/M/AE/000/003/4533N07323W005
A) CYHU B) 2411030425 C) 2502012359
E) OBST LGT U/S TOWER 453239N 0732242W (APRX 2.3NM ENE AD) 150FT
AGL, 240FT AMSL.

FR:
OBST LGT U/S TOUR 453239N 0732242W (APRX 2.3NM ENE AD) 150FT AGL,
240FT AMSL.)

(V1279/24 NOTAMN
Q) CZUL/QOLAS/IV/M/AE/000/003/4535N07328W005
A) CYHU B) 2411021033 C) 2501312359
E) OBST LGT U/S CRANE 453455N 0732825W (APRX 4.5NM NNW AD) 246FT
AGL, 282FT AMSL.

FR:
OBST LGT U/S GRUE 453455N 0732825W (APRX 4.5NM NNW AD) 246FT AGL,
282FT AMSL.)

(E6223/24 NOTAMN
Q) CZUL/QFATT/IV/BO/A/000/999/4531N07325W005
A) CYHU B) 2410311302 C) 2504171600
E) TRIGGER NOTAM - AIP SUPPLEMENT 87/24 IN EFFECT. QUEBEC REGION -
SAINT-HUBERT AIRPORT (CYHU) MULTIPLE CONSTRUCTION PROJECTS

FR:
NOTAM DECLENCHEUR - SUPPLEMENT D'AIP 87/24 EN VIGUEUR. QUEBEC
REGION - SAINT-HUBERT AIRPORT (CYHU) MULTIPLES CONSTRUCTIONS
PROJECTS)

(E6209/24 NOTAMN
Q) CZUL/QFWAS/IV/M/A/000/999/4531N07325W005
A) CYHU B) 2410301916 C) 2501301900
E) WDI THR 06R U/S

FR:
WDI THR 06R U/S)

(E6104/24 NOTAMN
Q) CZUL/QMXXX/IV/M/A/000/999/4531N07325W005
A) CYHU B) 2410282100 C) PERM
E) AMEND PUBLICATIONS: TWY B AND TWY C: AGN TO READ: IIIB

FR:
MODIFIER PUBLICATIONS: TWY B ET TWY C: AGN DEVRAIT LIRE: IIIB)

(E6059/24 NOTAMR E6057/24
Q) CZUL/QFAXX/IV/NBO/A/000/999/4531N07325W005
A) CYHU B) 2410241745 C) 2501231800EST
E) TOUCH AND GO NOT AUTH WHEN TWR CLSD

FR:
POSE ET DECOLLE NON AUTH QUAND LA TWR CLSD)

(H5006/24 NOTAMR H4366/23

Q) CZXX/QADTT/IV/BO/E/000/999/5243N05321W999
A) CZUL CZQM CZQX B) 2410161344 C) 2504171600
E) TRIGGER NOTAM - AIP SUPPLEMENT 26/18 IN EFFECT. ADJUSTMENT TO THE CANADA AIR DEFENCE IDENTIFICATION ZONE (ADIZ).

FR:
NOTAM DECLENCHEUR - SUPPLEMENT D'AIP 26/18 EN VIGUEUR.
MODIFICATION DE LA ZONE D'IDENTIFICATION DE DEFENSE AERIENNE DU CANADA)

(H5004/24 NOTAMR H2424/24
Q) CZUL/QAFTT/IV/BO/E/000/100/5440N06941W999
A) CZUL B) 2410161330 C) 2504171600
E) TRIGGER NOTAM - AIP SUPPLEMENT 43/24 IN EFFECT UNTIL 10 JUN 2027
HIGH SPEED TEST FLIGHTS BELOW 10 000 FEET

FR:
NOTAM DECLENCHEUR - SUPPLEMENT D'AIP 43/24 EN VIGUEUR JUSQU'AU 10 JUN 2027 VOLS D'ESSAI A HAUTE VITESSE EN DESSOUS DE 10 000 PIEDS)

(E5862/24 NOTAMR E5016/24
Q) CZUL/QOBT/IV/BO/AE/000/005/4528N07344W031
A) CYUL B) 2410161315 C) 2504171600
E) TRIGGER NOTAM - AIP SUPPLEMENT 70/24 IN EFFECT. CRANES ERRECTED WITHIN 30NM OF MONTREAL/PIERRE ELLIOTT TRUDEAU INTL AIRPORT

FR:
NOTAM DECLENCHEUR - SUPPLEMENT D'AIP 70/24 EN VIGUEUR. GRUES SITUEES DANS UN RAYON DE 30 NM DE L'AEROPORT INTL PIERRE-ELLIOTT-TRUDEAU DE MONTREAL)

(E5353/24 NOTAMR E5276/24
Q) CZUL/QMXLC/IV/M/A/000/999/4531N07325W005
A) CYHU B) 2409201358 C) 2412201400
E) TWY K BTN RWY 06L AND CPAQ CLSD.

FR:
TWY K BTN RWY 06L ET CPAQ CLSD.)

(E5213/24 NOTAMR E5045/24
Q) CZUL/QPIAU/I/NBO/A/000/999/4531N07325W005
A) CYHU B) 2409131821 C) 2412131800EST
E) DUE CONST:
RNAV (GNSS) RWY 06R APCH: NOT AUTH
. .
RNAV (GNSS) RWY 24L APCH: NOT AUTH

FR:
EN RAISON DE CONST:
APCH RNAV (GNSS) PISTE 06R: NON AUTH
. .
APCH RNAV (GNSS) PISTE 24L: NON AUTH)

(E5144/24 NOTAMR E3433/24
Q) CZUL/QMRLT/IV/NBO/A/000/999/4531N07325W005
A) CYHU B) 2409111319 C) 2412121300
E) RWY 06R/24L AVBL FOR ACFT WINGSPAN LESS THAN 24M (78FT) ONLY

FR:
RWY 06R/24L AVBL POUR ACFT ENVERGURE MOINS DE 24M (78FT) SEULEMENT)

(E5027/24 NOTAMR E3253/24
Q) CZUL/QMXXX/IV/M/A/000/999/4531N07325W005
A) CYHU B) 2409051749 C) 2412051800
E) TWY B FIRST 500FT FM ENA UNCONTROLLED

FR:
TWY B PREMIER 500FT FM DE L'ENA NON CONTROLLE)

(H3920/24 NOTAMN
Q) CZXX/QOEXX/IV/NBO/E/000/999/5243N05321W999
A) CZUL CZQM CZQX B) 2408231347 C) 2411211600EST
E) AIRSPACE SECURITY WARNING ISSUED BY THE DEPARTMENT OF TRANSPORT IN RESPONSE TO THE SECURITY SITUATION IN AFGHANISTAN. CANADIAN AIR OPR AND OWNERS OF ACFT REGISTERED IN CANADA ARE RECOMMENDED TO MAINTAIN A FLT LVL EQUAL TO OR ABV FL320, WITHIN THE KABUL FIR (OAKX), DUE TO POTENTIAL RISK TO AVIATION FM EXTREMIST AND MIL ACT AND LTD RISK MITIGATION CAPABILITIES. THIS NOTAM SUPERSEDES THE ADVICE FOR AFGHANISTAN IN AIC 13/24.

FR:
AVERTISSEMENT RELATIF A LA SECURITE DE L'ESPACE AERIEN EMIS PAR LE MINISTERE DES TRANSPORTS EN REPONSE A LA SITUATION DE SECURITE EN AFGHANISTAN. IL EST RECOMMANDE AUX EXPLOITANTS ACFT CANADIENS ET AUX PROPRIETAIRES D'AERONEFS IMMATRICULES AU CANADA DE MAINTENIR UN NIVEAU DE VOL EGAL OU SUPERIEUR AU FL320 DANS LA FIR KABUL (OAKX). RISQUE POTENTIEL LIE A L'ACTIVITE DES EXTREMISTES ET DES MIL ET CAPACITES LIMITEES D'ATTENUATION DES RISQUES. CE NOTAM REMPLACE LA RECOMMANDATION S'APPLIQUANT A L'AGHANISTAN CONTENUE DANS L'AIC 13/24.)

ST-MATHIAS - CSP5 - Reg

NOTAM

(H5495/24 NOTAMN

Q) CZUL/QXXXX/IV/NBO/E/000/280/4638N07245W250
A) CZUL B) 2411161126 C) 2411170300
E) DUE TO REDUCED SYSTEM CAPACITY, IFR TRAINING FLT NOT AUTH AND
VFR FLT INCLUDING PHOTO SURVEYS CAN ANTICIPATE RESTRICTIONS
AND/OR DLA UP TO 60MIN IN AIRSPACE SOUTH OF A LINE MIVOK - OTONA
- IKMOL - 473402N 0704811W - 465204N 0694911W EXC IN OTTAWA,
MONTREAL AND QUEBEC TERMINAL AREAS. VFR PHOTO SURVEY FLT PPR
1-800-633-1353. INFO CTC 514-633-3365

FR:

EN RAISON DE LA CAPACITE REDUITE DU SYSTEME, FLT IFR
D'ENTRAINEMENT NON AUTH ET FLT VFR INCLUANT LES VOLS DE LEVES
PHOTOGRAPHIQUES PEUVENT ANTICIPER DES RESTRICTIONS ET/OU DLA
JUSQU'A 60MIN DANS L'ESPACE AERIEN AU SUD D'UNE LIGNE MIVOK -
OTONA - IKMOL - 473402N 0704811W - 465204N 0694911W, EXC DANS
LES ZONES TERMINAL D'OTTAWA, MONTREAL ET QUEBEC. TOUS FLT DE
LEVES PHOTOGRAPHIQUES VFR PPR 1-800-633-1353. INFO CTC
514-633-3365)

(H5491/24 NOTAMR H5490/24

Q) CZXX/QOEXX/IV/NBO/E/000/999/5243N05321W999
A) CZQX CZQM CZUL B) 2411151800 C) 2412151600EST
E) PURSUANT TO SECTION 5.1 OF THE AERONAUTICS ACT, THE MINISTER OF
TRANSPORT IS OF THE OPINION IT IS NECESSARY FOR AVIATION SAFETY
AND THE PROTECTION OF THE PUBLIC TO PROHIBIT CANADIAN AIR
OPERATORS AND OWNERS OF AIRCRAFT REGISTERED IN CANADA FROM
OPERATING BELOW FL100 WITHIN HAITIAN AIRSPACE AND FIR
PORT-AU-PRINCE (MTEG) DUE TO POTENTIAL RISK TO AVIATION FROM
GANG ACTIVITY.
THE MINISTER MAY GRANT EXCEPTIONAL WAIVERS FOR HUMANITARIAN OR
MEDEVAC OPERATIONS. AIR OPERATORS WISHING TO OBTAIN SUCH AN
AUTHORIZATION MUST APPLY TO THE DEPARTMENT OF TRANSPORT AT
1-877-992-6853 OR 1-613-992-6853 OR BY EMAIL AT
OPERATIONS.AVIATION(A)TC.GC.CA

FR:

EN VERTU DE L'ARTICLE 5.1 DE LA LOI SUR L'AERONAUTIQUE, LE
MINISTRE DES TRANSPORTS EST D'AVIS QU'IL EST NECESSAIRE POUR LA
SECURITE AERIENNE ET LA PROTECTION DU PUBLIC D'INTERDIRE AUX
EXPLOITANTS AERIENS ET AUX PROPRIETAIRES D'AERONEFS IMMATRICULES
AU CANADA D'OPERER SOUS FL100 DANS L'ESPACE AERIEN HAITIEN ET
DANS LA REGION D'INFORMATION DE VOL DE PORT-AU-PRINCE (MTEG) EN
RAISON DES RISQUES POTENTIELS POUR L'AVIATION DECOULANT DES
ACTIVITES DES GANGS.
LE MINISTRE PEUT ACCORDER DES DEROGATIONS D'EXCEPTION POUR LES
OPERATIONS HUMANITAIRES OU D'EVACUATION MEDICALE. LES
EXPLOITANTS AERIENS QUI SOUHAIENT OBTENIR UNE TELLE
AUTORISATION DOIVENT EN FAIRE LA DEMANDE AU MINISTERE DES
TRANSPORTS AU 1-877-992-6853 OU AU 1-613-992-6853 OU PAR
COURRIEL A: OPERATIONS.AVIATION(A)TC.GC.CA

(G3236/24 NOTAMN

Q) CZXX/QGWAU/IV/NBO/E/000/999/4409N07532W239
A) CZYZ CZUL B) 2411181201 C) 2411222359
D) DAILY 1201-2359
E) GPS INTERFERENCE EXER
RADIUS 239NM CENTER 440847N 0753136W FL400-UNL,
198NM RADIUS AT FL250,
139NM RADIUS AT 10000FT AMSL,
104NM RADIUS AT 4000FT AGL,
37NM RADIUS AT 50FT AGL.
GNSS SIGNAL MAY BE PERIODICALLY INTERRUPTED. INFORM ATC OF ANY
ADVERSE IMPACT.

FR:

EXER D'INTERFERENCE GPS
RAYON 239NM CENTRE 440847N 0753136W FL400-UNL,
198NM RAYON A FL250,
139NM RAYON A 10000FT AMSL,
104NM RAYON A 4000FT AGL,
37NM RAYON A 50FT AGL.
LES SIGNAUX GNSS PEUVENT ETRE INTERROMPUS PERIODIQUEMENT.
INFORMER ATC DE TOUT IMPACT NEGATIF.)

(H5006/24 NOTAMR H4366/23

Q) CZXX/QADTT/IV/BO/E/000/999/5243N05321W999
A) CZUL CZQM CZQX B) 2410161344 C) 2504171600
E) TRIGGER NOTAM - AIP SUPPLEMENT 26/18 IN EFFECT. ADJUSTMENT TO THE
CANADA AIR DEFENCE IDENTIFICATION ZONE (ADIZ).

FR:

NOTAM DECLENCHEUR - SUPPLEMENT D'AIP 26/18 EN VIGUEUR.
MODIFICATION DE LA ZONE D'IDENTIFICATION DE DEFENSE AERIENNE DU
CANADA)

(H5004/24 NOTAMR H2424/24
Q) CZUL/QAFTT/IV/BO/E/000/100/5440N06941W999
A) CZUL B) 2410161330 C) 2504171600
E) TRIGGER NOTAM - AIP SUPPLEMENT 43/24 IN EFFECT UNTIL 10 JUN 2027
HIGH SPEED TEST FLIGHTS BELOW 10 000 FEET

FR:
NOTAM DECLENCHEUR - SUPPLEMENT D'AIP 43/24 EN VIGUEUR JUSQU'AU
10 JUN 2027 VOLS D'ESSAI A HAUTE VITESSE EN DESSOUS DE 10 000
PIEDS)

(E5862/24 NOTAMR E5016/24
Q) CZUL/QOBT/IV/BO/AE/000/005/4528N07344W031
A) CYUL B) 2410161315 C) 2504171600
E) TRIGGER NOTAM - AIP SUPPLEMENT 70/24 IN EFFECT. CRANES ERRECTED
WITHIN 30NM OF MONTREAL/PIERRE ELLIOTT TRUDEAU INTL AIRPORT

FR:
NOTAM DECLENCHEUR - SUPPLEMENT D'AIP 70/24 EN VIGUEUR. GRUES
SITUEES DANS UN RAYON DE 30 NM DE L'AEROPORT INTL
PIERRE-ELLIOTT-TRUDEAU DE MONTREAL)

(K3127/24 NOTAMN
Q) CZUL/QOBCE/IV/M/AE/000/002/4535N07314W005
A) CXXX B) 2410021500 C) 2412220500
E) CSB3 ST-MATHIEU-DE-BELOEIL (GILLES BEAUDET)
POSSIBILITY OF CONCRETE PUMP WITHIN 140FT RADIUS CENTRED ON
453518N 0731402W APRX 100FT BFR DTHR 33 AND 280FT NE EXTENDED
RCL. 153FT AGL 199FT AMSL.

FR:
CSB3 ST-MATHIEU-DE-BELOEIL (GILLES BEAUDET)
POSSIBILITE DE POMPE A BETON DANS UN RAYON DE 140FT CENTRE
453518N 0731402W APRX 100FT BFR DTHR 33 ET 280FT AU NE DU
PROLONGEMENT DE RCL. 153FT AGL 199FT AMSL.)

(H3920/24 NOTAMN
Q) CZXX/QOEXX/IV/NBO/E/000/999/5243N05321W999
A) CZUL CZQM CZQX B) 2408231347 C) 2411211600EST
E) AIRSPACE SECURITY WARNING ISSUED BY THE DEPARTMENT OF TRANSPORT
IN RESPONSE TO THE SECURITY SITUATION IN AFGHANISTAN. CANADIAN
AIR OPR AND OWNERS OF ACFT REGISTERED IN CANADA ARE RECOMMENDED
TO MAINTAIN A FLT LVL EQUAL TO OR ABV FL320, WITHIN THE KABUL
FIR (OAKX), DUE TO POTENTIAL RISK TO AVIATION FM EXTREMIST AND
MIL ACT AND LTD RISK MITIGATION CAPABILITIES. THIS NOTAM
SUPERSEDES THE ADVICE FOR AFGHANISTAN IN AIC 13/24.

FR:
AVERTISSEMENT RELATIF A LA SECURITE DE L'ESPACE AERIEN EMIS
PAR LE MINISTERE DES TRANSPORTS EN REPONSE A LA SITUATION DE
SECURITE EN AFGHANISTAN. IL EST RECOMMANDE AUX EXPLOITANTS
ACFT CANADIENS ET AUX PROPRIETAIRES D'AERONEFS IMMATRICULES
AU CANADA DE MAINTENIR UN NIVEAU DE VOL EGAL OU SUPERIEUR AU
FL320 DANS LA FIR KABUL (OAKX). RISQUE POTENTIEL LIE A
L'ACTIVITE DES EXTREMISTES ET DES MIL ET CAPACITES LIMITEES
D'ATTENUATION DES RISQUES. CE NOTAM REMPLACE LA RECOMMANDATION
S'APPLIQUANT A L'AGHANISTAN CONTENUE DANS L'AIC 13/24.)